

Host Committee Members

Host Committee Chair

Shiro Kuniya Oh-Ebashi LPC & Partners

〈As of March 2010〉

Host Committee Members

Mitsue Aizawa	Bingham McCutchen Murase, Sakai Mimura Aizawa Foreign Law Joint Enterprise
Mitsuru Claire Chino	Itochu Corporation
Shigeyoshi Ezaki	Anderson Mori & Tomotsune
Yukukazu Hanamizu	Yuasa & Hara
Takuji Hasegawa	Miyake & Partners
Masahisa Ikeda	Shearman & Sterling LLP
Yoshifumi Ikeda	Eiko Sogo Law Office
Hitoshi Inada	General Manager, Legal Dept., Mitsubishi Corporation
Miyuki Ishiguro	Nagashima Ohno & Tsunematsu
Ryosuke Ito	TMI Associates
Alexander R. Jampel	Baker & McKenzie GJB Tokyo Aoyama Aoki Koma Law Office (Gaikokuho Joint Enterprise)
Kaku Kato	General Manager, Legal Dept., Mitsui & Co., Ltd.
Kazuhiro Kobayashi	Kikkawa Law Offices
Masafumi Kodama	Kitahama Partners
Yoshiko Koizumi	City-Yuwa Partners
Hideki Kojima	Kojima Law Offices
Yoshio Kumakura	Nakamura & Partners
Yukitaka Murakami	Tosabori Law-Office
Hidefumi Naito	Naito Sogo Law Office
Kiyoshi Ogawa	General Manager, Legal Dept., Sumitomo Corporation
Haruo Okada	H. Okada International Law Offices
Yoshihiko Okuno	Okuno & Partners
Nobuyuki Ono	Karasuma Law Office
Teruji Ono	Former General Manager, Legal Dept., Takeda Pharmaceutical Company Limited
Hitoshi Sakata	Oike Law Office
Masahiro Shimojo	Nishimura & Asahi
Hiroe Toyoshima	Nakamoto & Partners
Harumichi Uchida	Mori Hamada & Matsumoto
Shuji Yamaguchi	Okabe & Yamaguchi

Host Committee Advisory Board

Honorary Advisor

Kunio Hamada First President of IPBA, Former Justice of Supreme Court of Japan

Executive Advisor

Nobuo Miyake Past President of IPBA, First Secretary-General of IPBA, Founding Member of IPBA

Advisors

Hisashi Hara	President of IPBA Japan Chapter, Former Jurisdictional Council Member - Japan
Takashi Ejiri	Former Secretary-General of IPBA
Koichiro Nakamoto	Former Secretary-General of IPBA
Koji Shindo	Professor Emeritus of Tokyo University
Tohru Motobayashi	Former President of Japan Federation of Bar Associations
Akio Kioi	Former President of Japan Federation of Bar Associations
Kazumasa Kuboi	Former President of Japan Federation of Bar Associations
Seigo Hirayama	Former President of Japan Federation of Bar Associations
Makoto Miyazaki	President of Japan Federation of Bar Associations
Shigeo Takii	Former Justice of Supreme Court
Mutsuo Tahara	Justice of Supreme Court
Keiichi Tadaki	Former Prosecutor-General
Takeo Kosugi	Former President of LAWASIA
Akira Kawamura	Vice-President of IBA
Yasuharu Nagashima	Former Trustee of Japanese American Society for Legal Studies
Takeji Yamamoto	Former President of Tokyo Bar Association
Kenji Yamagishi	President of Tokyo Bar Association
Susumu Murakoshi	Former President of Dai-ichi Tokyo Bar Association
Hitoshi Tanaka	President of Dai-ichi Tokyo Bar Association
Shoichiro Niwayama	Former President of Dai-ni Tokyo Bar Association
Tatsuya Kawasaki	President of Dai-ni Tokyo Bar Association
Masaru Ueno	Former President of Osaka Bar Association
Morito Hata	President of Osaka Bar Association
Ryoichi Ishikawa	Former President of Kyoto Bar Association
Toyooki Murai	President of Kyoto Bar Association

20th Anniversary ~ Welcome Back to Japan!



Inter-Pacific Bar Association

21st Annual Meeting and Conference

April 21-24, 2011 Kyoto/Osaka, Japan

Conference Theme

Innovation

Venue: Kyoto International Conference Center

Registration Brochure



Contents

Welcome Messages	1
Conference Schedule at a Glance	4
Opening Ceremony and Plenary Session	6
Special Sessions and Committee Programs	7
Scholarship Committee Silent Auction	16
Social Programs	18
Optional Excursion	19
Accompanying Persons' Programs, Golf Tournaments	20
Pre/Post-Conference Optional Tours	21
Registration	24
Conference Venue	26
Accommodations	27
Access to Kyoto	30
General Information	31
Sponsors	32
An Invitation to Join the Inter-Pacific Bar Association	34
IPBA Leadership 2010-2011	35

Welcome Messages

Message from the President of the IPBA



Welcome to Kyoto/Osaka and to the 21st Annual Meeting and Conference of the Inter-Pacific Bar Association. This Conference brings us back to our roots and founding in Japan, in a city steeped with history and tradition. This 21st Annual Meeting and Conference also represents a key anniversary in the history of the IPBA.

The Kyoto/Osaka Host Committee, chaired by the IPBA President-Elect, Shiro Kuniya, has put into place an extraordinary educational and social programme, that focuses, at this historic site and venue, on the future. The Conference theme of "Innovation" will be considered from legal, business and policy perspectives, and will be a catalyst for innovation, collaboration and diversity within the IPBA and its members.

The Kyoto/Osaka Conference will also host a landmark joint special session with APEC (Asia-Pacific Economic Cooperation), a very influential intergovernmental agency, which facilitates economic growth, economic and technical cooperation, and liberal trade and investment in the Asia-Pacific region.

However, the IPBA Annual Conferences are much more than educational and thought-provoking events. As ever, IPBA Conferences represent unsurpassed opportunities for business lawyers to expand their networks of professional relationships and to come to the forefront of the latest developments in the law and practice in the Asia-Pacific region. As ever, the IPBA Conferences allow one to enjoy a level of collegiality and friendship which is a hallmark of the IPBA.

I look forward to welcoming you to this historic location and an exceptional 21st Annual Meeting and Conference in Kyoto/Osaka.



LEE Suet-Fern
IPBA President

Message from the IPBA 2011 Kyoto/Osaka Host Committee Chair



It is truly an honor and pleasure to welcome you to IPBA's 21st Annual Meeting and Conference from April 21 to 24, 2011 in Kyoto/Osaka, Japan, a place rich with history, culture and natural beauty.

This conference also proudly marks the 20th anniversary of the IPBA, which was founded here in Japan in April 1991. Since then, the IPBA membership has grown remarkably in number and influence. Today, the IPBA has over 1,400 members from 65 different jurisdictions, all sharing a commitment to the development of laws and the best legal practices in the Asia-Pacific region.

"Innovation" is this year's conference theme. It was inspired by the IPBA's desire to strengthen its role as an agent of change in the Asia-Pacific region. In this spirit, the various committees have put together an exciting palette of programs with notable speakers and social activities providing ample opportunities to bond and exchange new ideas, strategies and solutions.

We are also very excited to host the very first joint session between the Asia-Pacific Economic Cooperation (APEC) and the IPBA. This special session is the first step of a collaborative partnership between APEC's government leaders and IPBA's lawyers to help promote trade and cross-border investments in the Asia-Pacific region through joint activities that aim to develop professional legal services and legal infrastructures.

All these and more are in store for you! May you have an enjoyable, meaningful and memorable time here in Japan.

Sincerely,



Shiro Kuniya
IPBA 21st Annual Meeting and Conference, Kyoto/Osaka
Host Committee Chair

Message from the First President of the IPBA



It is with great pleasure to welcome you to the 21st Annual Meeting and Conference of the Inter-Pacific Bar Association. It has been 20 years since I welcomed the members of IPBA to our 1st Annual Meeting and Conference in Tokyo back in 1991. Twenty years is a significant milestone for any organization, especially an organization focusing on the Asia-Pacific region which during the past 20 years has developed and advanced more than any other region in the world in many ways.

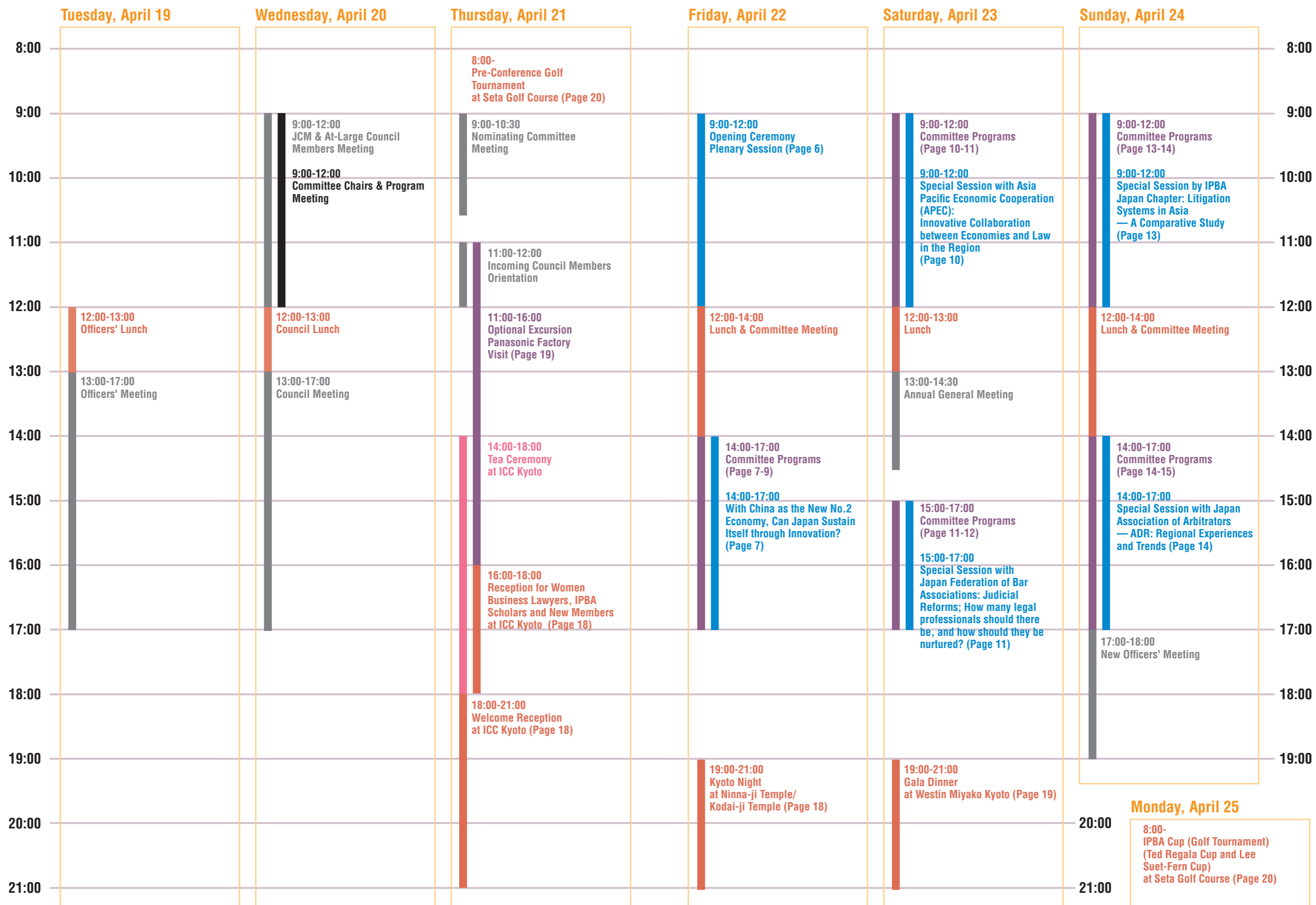
The goal of the founders of IPBA including myself was to create the region's most friendly, prominent and diverse bar association on a modest scale so that both local and expatriate business lawyers in the region may participate freely, benefit intellectually and enjoy each other's company greatly. For such purposes, certain innovative provisions are incorporated in its Articles of Association. IPBA has achieved and surpassed that goal beyond my wildest dreams through the great efforts of the founders and other leaders that have faithfully and tirelessly guided and supported the organization and a large group of loyal members that has kept coming back to annual conferences and other gatherings for the past 20 these years. I am confident that the current and future leaders of IPBA and its faithful members will continue this great legacy for many more decades to come.

The agenda of the Kyoto/Osaka Conference includes a full range of cutting edge business and legal topics reflecting the Conference theme of "Innovation" as well as a range of social events that take full advantage of the beauty and history of Kyoto. I look forward to seeing all of my IPBA family members in April and meeting new members that are so vital in continuing to keep this organization friendly, strong, vibrant and relevant in this ever-changing world of ours.



Kunio Hamada
The First President of the IPBA

Conference Schedule at a Glance



Opening Ceremony and Plenary Session

Friday, April 22

Opening Ceremony

9:00-9:30

The Conference opens at the Main Hall of the Kyoto International Convention Center. The Main Hall has been the stage of numerous historic conferences - for instance, The Kyoto Protocol on Climate Change was born at this hall. The IPBA celebrates its 20th anniversary, entering its third decade. Join and share this momentous occasion, with the opening declaration by the IPBA President, Mrs. Lee Suet-Fern followed by the welcome speech by the first IPBA President and the former Supreme Court Justice of Japan, Mr. Kunio Hamada.

- Welcome address by Mrs. Lee Suet-Fern, President of the IPBA

- 20th Anniversary Commemorative Speech by Mr. Kunio Hamada, 1991 First President of the IPBA

Plenary Session

9:30-12:00

Innovation

— Key to the Development of the Asia-Pacific Region, for Science, Business and the Legal Professions.

The following four eminent guest speakers with abundant legal, political, science and business backgrounds will give their presentations followed by a discussion on how their respective fields have been involved in and should be involved in the future in promoting "Innovation."

Speakers are happy to take questions from the floor.

His Excellency John V. Roos

U.S. Ambassador to Japan



President Barack Obama nominated John V. Roos as the Ambassador to Japan in June 2009. He was confirmed by the U.S. Senate and sworn in the following August. Ambassador Roos formerly served as the CEO of the Silicon Valley law firm, Wilson Sonsini Goodrich & Rosati, which he helped build into a pioneer provider of legal services for technology, life sciences and growth companies, such as Apple and Google. As a lawyer, his specialties include corporate finance, corporate law and governance, entrepreneurial services, mergers and acquisitions, and venture capital.

Dr. Shinya Yamanaka, M.D., Ph. D.

Kyoto University



A brilliant Japanese physician and stem cell researcher well-known for his invention of iPS (Induced Pluripotent Stem Cells) to create various organs for humans. He is a professor at the Institute for Integrated Cell-Material Sciences (iCeMS) and the Institute for Frontier Medical Sciences at Kyoto University, the Director of the Center for iPS Cell Research and Application (CiRA) at iCeMS, and a senior investigator at the University of California at San Francisco (UCSF)-affiliated Gladstone Institute of Cardiovascular Disease, and a UCSF professor of anatomy. He was awarded the prestigious 2009 Albert Lasker Award for his work in the field of medicine as well as The Imperial Prize (2010), Japan Academy Prize (2010), the notable Shaw Prize (2008) and the Robert Koch Prize (2008).

Dr. Hiroshi Matsumoto, Ph. D.

President of Kyoto University



A well-known space scientist whose research interests focus on space radio science, space plasma physics and space solar power transmission. After obtaining a Master's degree and a doctorate in Engineering from Kyoto University in 1967 and 1973, respectively, Dr. Matsumoto held several key teaching and administrative positions at Kyoto University including a visiting professorship from 1991 to 2005 at the Institute for Space and Astronomical Sciences, Institute for Fusion Sciences of Japan & Wuhan University in China.

Mr. Yasuchika Hasegawa

President and CEO of Takeda Pharmaceutical Company Limited



He is an successful businessman and executive, well-known for his activities on a global basis. He holds key positions in governmental agencies and economic organizations, including Chairman of Economic Growth Strategy Board, Ministry of Land, Infrastructure, Transport and Tourism, Vice Chairman of the Board of Councilors of Keidanren (Japan Economic Federation), and Vice Chairman of Keizaidoyukai (Japan Association of Corporation Executives).

Special Sessions and Committee Programs

(Special Sessions: Blue, Committee Programs: Purple)

Friday, April 22

Efficient Arbitration – Best Practices

Committees	Dispute Resolution and Arbitration, Corporate Counsel	
Time	14:00-15:30	
Synopsis	The session will focus on diverse aspects of arbitration, viz., commencement (drafting of arbitration clause, institutional versus ad hoc arbitration etc.); interlocutory procedures, interim relief, etc; hearing and finally enforcement. Five speakers will present the best practices in these areas.	
Moderators	Mohan Pillay David Kreider	Pinsent Masons MPillay, Singapore Vodafone New Zealand Ltd., Auckland
Speakers	Doug Jones Francis Xavier Ariel Ye Jose Rosell Kumkum Sen	Clayton Utz, Sydney Rajah & Tann, Singapore King & Wood, Beijing Hughes Hubbard & Reed, Paris Bharucha & Partners, New Delhi

With China as the New No.2 Economy, Can Japan Sustain Itself through Innovation?

Committee	Host Committee	
Time	14:00-17:00	
Synopsis	This session focuses on various aspects of the dramatically improving China-Japan business relationship including their inbound and outbound investments between two countries, technology development of both countries, etc, through cutting edge reports from Chinese lawyers, Japanese lawyers and the present Chief of the Legal Department of Panasonic China, all of whom have abundant experience and knowledge in the latest practice, the relevant regulations and issues concerning this field. Speakers will speak English, Mandarin or Japanese, and simultaneous translation for these three languages will be provided.	
Program Coordinators	Shiro Kuniya Eriko Hayashi	Oh-Ebashi LPC & Partners, Osaka/Tokyo Oh-Ebashi LPC & Partners, Shanghai/Tokyo
Moderator	Shigehiko Ishimoto	Mori Hamada & Matsumoto, Tokyo
Speakers	Audrey Chen Fengchang Tian Simin Xie Akira Moriwaki Takashi Nomura Yu Wakae Michimasa Matsumoto	Jun He, Beijing Longan Law Firm, Beijing C&I Partners, Shanghai Anderson Mori & Tomotsune, Tokyo Nishimura & Asahi, Tokyo Nagashima Ohno & Tsunematsu, Tokyo Panasonic China, Beijing

Innovative Regulation to Promote Innovative Environmental Technologies

Committees	Energy and Natural Resources, Environmental Law, Cross-Border Investment	
Time	14:00-17:00	
Synopsis	Many hope that technological developments will be the answer to mitigating climate change and moving to a low carbon economy. In this session, we will look at emerging environmental technologies (including integrated carbon capture and storage, wind, solar and geothermal) and the innovative regulatory mechanisms needed to advance research, development and commercial scale deployment.	
Moderator	Stephen L. Marsh	Luce, Forward, Hamilton & Scripps LLP, San Diego
Speakers	Natsuko Ogawa Jeffrey Robert Holt Dr. Hardiv Situmeang Kyoung Yeon Kim	Blake Dawson, Tokyo Saipem SA, Saint Quentin en Yvelines Indonesian National Committee-World Energy Council, Jakarta Yulchon, Seoul

Disability Discrimination in the Workplace: Cross-Border Laws, Liability and Trends

Committee	Employment and Immigration Law	
Time	14:00-17:00	
Synopsis	Disability discrimination laws are in development globally, and are of critical importance. Failure to observe the relevant principles can lead to reputational damage, especially for multinational employers operating globally, even in countries without such laws. Our panel of counsel from various jurisdictions will give an update regarding laws in Australia, Canada, Hong Kong, Japan, Taiwan, the U.K. and the U.S., and offer their collective insight into what these laws mean, both for employers and for providers of services.	
Moderator	Emerico O. De Guzman	Angara Abello Conception Regala & Cruz Law Offices, Manila
Speakers	Jacqueline Bart Emily Duncan Steve Hanley Fiona Loughrey Aki Tanaka John West Yoshikazu Ikehara	Bart & Associates, Toronto Gall, Hong Kong Winkler Partners, Taipei Simmons & Simmons, Hong Kong Kitahama Partners, Osaka Selborne Chambers, Sydney Tokyo Advocacy Law Office, Tokyo

Innovation of Insolvency Practice

Committee	Insolvency	
Time	14:00-17:00	
Synopsis	<p>Session 1 (14:00-15:30) "Innovative Reorganization of Airline Bankruptcy" We will analyze the Japan Airlines case at the session together with discussions on the experiences of U.S. airlines and other countries' airline bankruptcy cases together.</p> <p>Moderator Lynn Harrison III Harrison, Curtis, Mallet-Prevost, Colt & Mosle LLP, New York</p> <p>Speakers Eiji Katayama Helena Huang and 2-4 more speakers Abe, Ikubo & Katayama, Japan Airline Trustee, Tokyo Kirkland Ellis, Hong Kong</p> <p>Session 2 (15:30-17:00) "Innovation of Bankruptcy Practice - M&A, Asset Sale and Chinese New Bankruptcy Practice" In this session, we will discuss various methods for expedited closing of reorganization cases in various jurisdictions; (i) asset sale under Section 363 of U.S. Title 11, (ii) sponsorship practice in Japan, (iii) court supervised M&A in Korea and (iv) the Chinese new bankruptcy practice.</p> <p>Moderator Byung-Joo Lee Shin & Kim, Seoul</p> <p>Speakers Chester B. Salomon SooGeun Oh Zhengyou Yin Gregory Vijayendra G Hideyuki Sakai Becker, Glynn, Melames & Muffly LLP, New York Ewha University, Seoul W&H Law Firm, Beijing Rajah & Tann LLP, Singapore Bingham McCutchen Murase, Sakai Mimura Aizawa Foreign Law Joint Enterprise, Tokyo</p>	

Innovation in Legal Practice

Committee	Legal Practice	
Time	14:00-17:00	
Synopsis	The practice of law has been subject to rapid innovation in recent years. Among the many facets of innovation, we will focus on the listing of law firms in publicly traded stock markets, new kinds of fee arrangements, information technology, the outsourcing of legal work, etc.	
Moderators	Tay Beng Chai Satoshi Moriguchi	Tay & Partners, Kuala Lumpur Nagashima Ohno & Tsunematsu, Tokyo
Speakers	Hisashi Hara Jose Vicente E. Jimenez Hee-Chul Kang Mark Stinson and one more speaker on publicly listed law firms (to be announced)	Nagashima Ohno & Tsunematsu, Tokyo Jimenez Gonzales Bello Valdez Caluya & Fernandez (JGLaw), Manila Yulchon, Seoul Fasken Martineau DuMoulin LLP, Toronto

Dispute Resolution in Innovation

Committees	Dispute Resolution and Arbitration, Technology and Communications	
Time	15:30-17:00	
Synopsis	Technological innovation is often associated with and protected by inventor rights (patents, know-how, copyrights, or simply business secrets). Such rights, generally granted under national laws, international treaties and private contracts, are key to achieving progress. Dispute resolution in the area of innovation is challenging, because national laws and national public policy often interface or conflict with transnational business needs. In some jurisdictions, private dispute resolution may not be recognized, for example in the patent area. The session explores the status of and developments in private dispute resolution mechanisms in the field of innovation. Speakers will address topics that include: - Arbitrating IP validity claims (copyright, patent, trademark, business secrets) — where do we stand in major jurisdictions? - Resolving transnational innovation disputes privately — dos and donts - Preferred dispute resolution clauses in R&D agreements - The envisaged role of ADR in facilitating green technology transfers	
Moderators	Bernhard Meyer Shanti Mogan	MME Partners, Zurich Shearn Delamore & Co., Kuala Lumpur
Speakers	Brent Caslin Jun Hee Kim Rory J. Radding Erik Wilbers	Jenner & Block, Los Angeles Kim & Chang, Seoul Morrison Foerster, New York WIPO Arbitration and Mediation Center, Geneva

Special Program — Visiting to Osaka University Naval Architecture & Ocean Engineering

Committees	Maritime Law	
Time	13:00- 17:00	
Synopsis	Naval Architect and Recent Development Experiment on Impact of Irregular Wave & Wind to Ships etc	
Speakers	Prof. Masahiko Fujikubo Prof. Nomi Kato Assistant Prof. Naoya Umeda	Osaka University Suita Campus Osaka University Suita Campus Osaka University Suita Campus
Please note	Bus will depart at 13:00 from Kyoto International Convention Center. Online registrations via the IPBA Kyoto/Osaka website (http://www.ipba2011.org/) accepted on a first-come, first-served basis. Maximum number of participants: 40	



Best Paper Prize Programme

Guidelines:

1. The competition is open to all IPBA Members who have registered for the IPBA Annual Conference.
2. Articles submitted must focus primarily on legal issues that would be of interest to business and commercial lawyers in the world.
3. The competition is open to articles of up to 4,500 words excluding footnotes and bibliography. Entries outside the word limitation will be disqualified.
4. All entries must be in English, original, unpublished and not submitted or accepted elsewhere at the time of submission.
5. No more than one article may be submitted by the same author. Co-authored articles will not be accepted.
6. Entries must be received by the IPBA Secretariat at ipba@ipba.org by the paper submission deadline set by the Conference Secretariat. Late or incomplete articles will not be accepted for consideration.
7. A summary of the best paper will be published in the IPBA Journal. The paper selected to be published shall follow the IPBA's Publications Committee Guidelines, and copyright to the paper will belong to the IPBA.
8. The best paper will be selected by the Best Paper Selection Committee comprising of two to three Past Presidents of the IPBA.
9. Selection of the best paper will be based on: a) creativity and depth of the legal analysis; b) thoroughness of the legal research; and c) structure and writing style.
10. The author of the best paper will be acknowledged and presented with a certificate at the Annual General Meeting of the IPBA held during the Annual Conference.
11. Any inquiries regarding this Best Paper Prize programme should be sent to the IPBA Secretariat at ipba@ipba.org.
12. The Publications Committee will be responsible for the implementation of this programme.

For further information, please contact Hideki Kojima, Chairman of Publications Committee, at kojima@kojimalaw.jp.

Saturday, April 23

Special Session with Asia Pacific Economic Cooperation (APEC): Innovative Collaboration between Economics and Law in the Region

Committee	APEC Special Committee	
Time	9:00-12:00	
Synopsis	APEC and IPBA have already commenced a joint project to create a database of international business lawyers for access by APEC member economies. The representatives of APEC and IPBA will discuss potential future areas of further cooperation and interaction between lawyers in the Asia-Pacific region and APEC.	
Moderator	Nobuo Miyake	IPBA Past President and Chairman of APEC Committee, Tokyo
Speakers	APEC: TBA IPBA: Suet-Fern Lee IPBA President, Singapore Shiro Kuniya IPBA President-Elect, Tokyo Gerald Sumida IPBA Secretary-General, Honolulu	

The Deepwater Horizon Oil Well Disaster: Key Legal Issues and Challenges for the Future

Committees	Banking, Finance and Securities, Energy and Natural Resources, Environmental Law, Insurance, Maritime Law	
Time	9:00-12:00	
Synopsis	In this joint session, experts on banking, energy, environment, insurance and shipping will explore key legal issues in relation to the Deepwater Horizon disaster in the Gulf of Mexico, and the challenges which the disaster has raised in those fields.	
Moderator	Angus Rodger	Stephoe & Johnson, London
Speakers	Ryohei Nakazawa Marsh Broker Japan Inc., Tokyo Minoru Ota Nagashima Ohno & Tsunematsu, Tokyo Masahiko Ueno Cornes Limited, Kobe William A. Scott Stikeman Elliott, Toronto Robert Kwauk Blakes, Beijing Roger Martella Sidley Austin LLP, Washington, D.C.	

Role of In-House Counsel in Risk Management

Committee	Corporate Counsel	
Time	9:00-12:00	
Synopsis	Since the economic downturn, the in-house legal functions of corporations have risen in prominence and importance. Revolutionary changes have been implemented to reassess and reprioritize the management of risk. In-house legal departments are working smarter and more efficiently, to ensure that they address the large, strategic risks to the business, and not waste resources on less critical work. In this session, a panel comprising senior corporate counsels with global responsibilities will highlight these revolutionary changes within their companies and industries, and will offer their views about trends that will affect the futures of in-house legal practitioners and those of private practitioners representing major corporate clients.	
Moderator	David Kreider Vodafone New Zealand Ltd., Auckland	
Speakers	Anne Durez Total SA, Paris Grant Tao Motorola, Shanghai Samson Yu Kangxin Partners, Beijing David Hoover Federal Express Japan, Tokyo	

Innovative Construction Contracts

Committee	International Construction Projects	
Time	9:00-10:30	
Synopsis	This session will analyze recent innovative clauses in construction contracts including Green Construction Contract Clauses, Dispute Resolution Procedures, Liquidated Damages Provisions, Energy Projects, Limitations of Liability, and Interim Contract Milestones/Substantial Completion.	
Moderator	Keith C. Phillips	Watt, Tieder, Hoffar & Fitzgerald, McLean
Speakers	Atul Chitale A Y Chitale & Associates, New Delhi Philip L. Bruner Minneapolis	

Working Smart

Committees	Women Business Lawyers, Legal Development and Training	
Time	9:00-12:00	
Synopsis	This is an interactive session comprising a specialist panel of six experts, lawyers and non-lawyers, discussing innovations in three critical areas of legal career: billing practices and solutions, new style management and leadership in law firms that harness skills of women and non-lawyers, and stress management towards enhanced productivity and quality of life.	
Moderator	Ann Miller	The Law Offices of Ann G. Miller, San Francisco
Speakers	Cristina de A Salvador Miguel Neto Advogados Associados, Sao Paulo Jean-Claude Beaujour Hobson, Paris Caroline Berube HJM Asia Law & Co LLC, Guangdong Miyuki Ishiguro Nagashima Ohno & Tsunematsu, Tokyo Rajas Kasbekar Little & Co., Mumbai Kaoru Ichikawa J.EAP. Co. Inc., Tokyo	

Innovative Construction Techniques

Committee	International Construction Projects	
Time	10:30-12:00	
Synopsis	This session will deal with green construction material, architectural designs, IT, energy efficiency, sensor technologies, nanotechnology, rebuilding existing buildings for synergy with environment.	
Moderator	Moushumi Chopra	FoxMandal Little, Noida

Special Session with Japan Federation of Bar Associations: Judicial Reforms; How many legal professionals should there be, and how should they be nurtured? (Co-sponsored by the Japan Federation of Bar Association, supported by Osaka Bar Association and Kyoto Bar Association)

Committee	Host Committee	
Time	15:00-17:00	
Synopsis	In this special session, leaders of bar associations from the Asia-Pacific region will discuss the impacts of judicial reforms on legal professionals in each jurisdiction. We will especially focus on the increasing number of lawyers and the system to educate and nurture legal professionals.	
Program Coordinator	Takehisa Hamada	Naniwa Kyodo Law Office, Osaka
Moderator	John Kakinuki	International Relations Committee, the Japan Federation of Bar Associations, Tokyo
Speakers	Glenn Ferguson President, Law Council of Australia Kenji Utsunomiya President, the Japan Federation of Bar Associations Kim Pyung Woo President, the Korean Bar Association and one speaker from All China Lawyers Association or a major law firm in China	

Anti-Corruption Legislation and Their Inter-Play in Cross-Border Businesses

Committees	Corporate Counsel, Dispute Resolution and Arbitration	
Time	15:00-16:30	
Synopsis	This session will largely revolve around the new U.K. Bribery Act, 2010 and the U.S. Foreign Corrupt Practices Act. These statutes have wide ramifications on cross-border business and especially on multinationals.	
Moderators	Juliet Blanch Weil Gotshal & Manges, London Mitsuru Claire Chino ITOCHU Corporation, Tokyo	
Speakers	Patrick Norton Steptoe & Johnson, Washington, D.C. EY Park Kim & Chang, Seoul Lisa Osofsky Control Risks Group Holdings, Ltd., London Kevin Qian MWE China Law Offices, Shanghai Richard Keady Barlow Lyde & Gilbert, Hong Kong	

Innovation in Debt & Equity Capital Markets

Committee	Banking, Finance and Securities	
Time	15:00-17:00	
Synopsis	<p>This panel session will look at developments in capital markets since, and update on the regulatory response to the GFC after, the Manila conference held in the aftermath of the GFC. The session will cover:</p> <ul style="list-style-type: none"> - the outcome of reforms that were mooted, being drawn up, or being debated at the time of the Manila conference; - dark pools and particularly what they are, how they operate, why they emerged so soon after the GFC, and how they are regulated; and - developments in the use of derivatives since the GFC and the success or otherwise of regulators in bringing about reform of hedge fund activity. 	
Moderator	Robert Postema	Piper Alderman, Sydney
Speakers	Kapil Kirpalani Pieter R. Leguit Kenneth J. Stuart Hyun Joo Oh Anindita Jaiswal Shimpei Nakada	Pacific Harbor Capital, Ltd., Hong Kong Loyens & Loeff N.V., Amsterdam Becker, Glynn, Melamed & Muffly LLP, New York Lee & Ko, Seoul Majmudar & Co International Lawyers, Mumbai Nishimura & Asahi, Tokyo

Innovative Due Diligence Techniques – How Can We Improve?

Committees	Cross-Border Investment, Corporate Counsel	
Time	15:00-17:00	
Synopsis	<p>A legal due diligence is a tedious, expensive and often fairly unguided exercise, many times leading to a boring report read by few decision makers. Can it also be made quicker, at lower cost, focused on the most essential issues and provide a valuable and interesting tool helping to get the deal done and assist in the post-transaction integration?</p> <p>Points for discussion will include: how to organise an effective due diligence, how to cooperate/interact with financial, commercial and environmental processes, reporting format, findings as a part of the transaction documents, the use of virtual data rooms, how to interact with in-house counsel and novel areas of focus.</p> <p>The moderator and panel speakers have experience both from law firms and from the industry in both investors and recipient jurisdictions.</p> <p>The contemplated format will be that of a seminar with introduction to various aspects by the panel speakers.</p>	
Moderators	Ulf Ohrling Anne Durez	Mannheimer Swartling Advokatbyrå AB, Hong Kong Total SA, Paris
Speakers	Henry Mao Lesli Ligorner Lucas Chang Masahiro Nakatsukasa Manishi Pathak Noor Meurling	Jin Mao PRC Lawyers, Shanghai Paul, Hastings, Janofsky & Walker LLP, Shanghai Morgan Lewis, Beijing Chuo Sogo Law Office, P.C., Osaka Kochhar & Co., New Delhi Soebagjo, Jatim, Djarot, Jakarta
Program Coordinator	Jean Paul Chabaneix	Rodrigo, Elías & Medrano Abogados, Lima

Innovative Environmental Trade Barrier

Committees	Environmental Law, International Trade	
Time	15:00-17:00	
Synopsis	<p>This program will discuss environmental barriers to international trade, including the WTO case against China on minerals exports, the environmental protections related to forestry and agriculture, the environmental standards and liabilities imposed by free trade agreements, the REACH Regulation on new standards and requirements on the sale and use of chemicals for the production of goods exported to Europe, and other related issues.</p>	
Moderators	Rafael Vergara Robert Quon	Carey y Cia., Santiago Fasken, Vancouver
Speakers	Osamu Umejima Edmund W. Sim Xiao Jin Keum Sub Park Steve Marsh	White & Case, Tokyo Appleton Luff, Singapore King & Wood, Beijing Lee & Ko, Seoul Luce, Forward, Hamilton & Scripps LLP, San Diego

Sunday, April 24

Special Session by IPBA Japan Chapter: Litigation Systems in Asia – A Comparative Study

Committee	Host Committee	
Time	9:00-12:00	
Synopsis	<p>The IPBA's Japan Chapter has recently launched a comparative study project on the litigation systems in various Asian jurisdictions. At this session, panelists will discuss from a comparative viewpoint the varying features of such litigation systems, including service of process, discovery, preliminary injunctions, the use of juries, examination of witnesses, lawsuit stamp duties, qualifications for judges and other practical issues such as the reliability of the courts, actual practices inside and outside of courts, etc., for seven jurisdictions (China, India, Korea, Singapore, Thailand, Taiwan and Japan).</p>	
Moderator	Satoshi Moriguchi	Nagashima Ohno & Tsunematsu, Tokyo

Innovative Trade Finance

Committees	International Trade, Banking, Finance and Securities	
Time	9:00-12:00	
Synopsis	<p>This session covers various topics including Islamic finance, new financial structures for international resource/energy contracts, international sanctions compliance, and other issues.</p>	

M&A Negotiation Trends and Practice in U.S. and Asian Private Target, Public Target and LBO Deals (Part 2)

Committee	Cross-Border Investment	
Time	9:00-12:00	
Synopsis	<p>This session is a sequel to earlier session in 2010 IPBA Singapore Conference and will explore various issues relating to M&A negotiation trends and practices and compare similarities and differences in the United States and other Asian countries.</p>	
Moderator	Wilson Chu	K&L Gates, LLP, Dallas
Speakers	Leigh Walton Chief Justice Myron Steele Andrew Lim Richard Climan Joel Greenberg Michael DeSombre	Bass, Berry & Sims PLC, Nashville Delaware Supreme Court, Dover Allen & Gledhill, Singapore Dewey & LeBoeuf LLP, Silicon Valley Kaye Scholar, New York Sullivan Cromwell LLP, Hong Kong

Facilitating IP in Innovation

Committee	Intellectual Property	
Time	9:00-12:00	
Synopsis	<p>Innovation is the process of creating a new idea and carrying it through to equip enterprises to be competitive and to achieve market success. For enterprises in every industry, facilitating intellectual property rights may mean the difference between failure or securing sure success and greatly reducing risks. As such, how one facilitates, develops, protects and exploits intellectual property rights to maintain and enhance competitiveness is a critical issue for all businesses. The panel members will share their experiences with respect to intellectual property management, portfolio strategies, licensing and transfers.</p>	
Moderators	Guan Huat Khoo Maxine Chiang	Skrine, Kuala Lumpur Lee, Tsai & Partners, Taipei
Speakers	Juan Carlos Marquez Alexandra Neri Daniel Lim Riccardo G. Cajola Tomomi Yasuzane	Stites & Harbison, Alexandria Herbert Smith, Paris Stamford Law Corporation, Singapore Cajola & Associati, Milan Mitsui Engineering and Shipbuilding Co., Ltd., Tokyo

Mock Arbitration

Committee	Maritime Law	
Time	9:00-12:00	
Synopsis	<p>In this session, Maritime Committee members will show how maritime arbitration works in Japan. The mock case is a collision case between two boats at sea, where one crew was killed and one ship sank.</p>	

Innovative Related Party Tax Issues

Committee	Tax Law	
Time	9:00-12:00	
Synopsis	This session will examine the difficult tax issues that can arise from international related-party transactions, including the implications of the specific tax provisions dealing with transfer pricing, thin capitalization, shareholder loans, and Controlled Foreign Corporations (CFCs). The speakers will provide short examples of recent innovations and developments in their respective jurisdictions, with a view to providing a broad overview of experience in this area across the Asia-Pacific region.	
Moderator	Pieter de Ridder	Loyens & Loeff, Singapore
Speakers	Mathew Brittingham José Antonio Miguel Neto Bill Maclagan George Ribeiro Thomas Busching Akil Hirani Yushi Hegawa Sylvette Tankiang Maxim Alekseyev Joseph K. Fletcher Bob Cudd	Finlaysons, Adelaide Miguel Neto Advogados Associados, Sao Paulo Blake, Cassels & Graydon LLP, Vancouver Ribeiro Hui, Hong Kong Squire, Sanders & Dempsey LLP, Frankfurt Majmudar & Co., Mumbai Nagashima Ohno & Tsunematsu, Tokyo CVCLAW Villaraza Cruz Marcelo & Angangco, Makati Law Firm ALRUD, Moscow Morrison & Foerster, San Francisco Morrison & Foerster, New York

Special Session with Japan Association of Arbitrators — ADR: Regional Experiences and Trends

Committee	Dispute Resolution and Arbitration	
Time	14:00-17:00	
Synopsis	This session will focus on regional practices and peculiarities of alternative dispute resolution systems and practices bringing out cultural differences — what works where (and what does not).	
Moderators	Mohanadass Kanagasabai Koichi Miki	Mohanadass Partnership, Kuala Lumpur Keio University, Tokyo
Speakers	Michihiro Mori Sundra Rajoo Urs Lustenberger Paul Key Phil Bruner Lawrence Teh Axel Reeg	Nishimura & Asahi, Tokyo Sundra Rajoo Arbitration Chambers, Kuala Lumpur Lustenberger Glaus & Partner, Zurich Essex Court Chambers, London JAMS Global Engineering and Construction Group, New York/Chicago/Minneapolis Rodyk & Davidson, Singapore Reeg Rechtsanwälte, Mannheim

Air Liberalization, Liability of Aeroplane Manufacturer and Passenger Air Travel and Holiday Rights

Committee	Aviation Law	
Time	14:00-17:00	
Synopsis	This session will explore the following topics: 1. Liberalization of aviation in Asia-Pacific: public air transport services, business jet operations (regulatory framework, competition law and financing issues) 2. Passenger consumer rights protection in the Asia-Pacific region - in need of reform? 3. Aerospace manufacturers liability and risk mitigation	
Moderators	Peter Coles Kala Anandarajah	Barlow Lyde & Gilbert, Hong Kong Rajah & Tann LLP, Singapore
Speakers	Dr. Wafi Luis Pinto Jin Yu-Lai Paul Ng Scott Cunningham Ben Martin Mert Hifzi	Malaysian Airlines, Kuala Lumpur Jorge Neto Valente, Macau Shanghai KaiRong Law Firm, Shanghai Stephenson Harwood, Singapore Condon & Forsyth, Los Angeles Norton White, Sydney BLG, Singapore

Intersection of IP, Competition and International Trade — Technological Innovation, Technology Standards

Committees	Competition Law, Intellectual Property, International Trade	
Time	14:00-17:00	

Innovative Cross-Border Investment Techniques

Committees	Cross-Border Investment, Tax Law	
Time	14:00-17:00	
Synopsis	This session will examine legal structures currently being used to invest cross - border, with a particular emphasis on investment into China and India. Part I ("Current Legal Innovations") will consider the legal and regulatory aspects of recent developments. Part II ("Adding Value Through Tax Innovation") will discuss the tax implications of those developments and the way that careful structuring can increase tax efficiency (or at least avoid double taxation).	
Moderators	Neil Russ Yong-Jae Chang	Buddle Findlay, Auckland Lee & Ko, Seoul
Part I Speakers	Shigehiko Ishimoto Satoko Kikuta Xu Ping Henry Mao Sam Farrands Omar Puertas Rohit Kochhar	Mori Hamada & Matsumoto, Tokyo FoxMandal Little, Bangalore King & Wood, Beijing Jin Mao PRC Lawyers, Shanghai Minter Ellison, Hong Kong Cuatrecasas, Goncalves Pereira, Shanghai Kochhar & Co., New Delhi
Part II Speakers	Dominic Hui Atul Dua Ka Im Goh Jay Shim Jan Kooi Stuart Hutchinson	Ribeiro Hui, Shanghai Seth Dua, New Delhi Shearn Delamore & Co., Kuala Lumpur Kim & Chang, Seoul InternationalCounsel (Kooi Worldwide Tax) Simpson Grierson, Auckland



Following the Kyoto Conference on 26th April 2011 Arbitration Seminar at Tokyo

10:30am- (full day Program)
Venue: Japan Federation Bar Association

The Dispute Resolution & Arbitration Committee of the IPBA is pleased to announce a one-day Mock Arbitration cum Seminar at Tokyo. The Seminar will be presented in association with the JAA, the JCAA and CIArb and bring together some of the foremost names in arbitration in Asia.

The Seminar will begin with a keynote address by Prof. Doug Jones on the new UNCITRAL Model Law, to be followed by a Mock Arbitration moderated by Mr. Cedric Chao (Morrison & Foerster) and Mr. Hiroyuki Tezuka (Nishimura & Asahi). The wrap up will be by a panel discussion moderated by Mr. Christopher To (Hong Kong Construction Industry Council). A reception is also planned in the evening.

Details will be posted soon. For further information, please feel free to contact:

Sumeet Kachwaha (skachwaha@kaplegal.com); and
Mohanadass Kanagasabai (mohan@mohanadass.com)

This information is subject to change.
Please check the IPBA 2011 Kyoto/Osaka website (www.ipba2011.org) for the latest information.

Scholarship Committee Silent Auction



INTER-PACIFIC BAR ASSOCIATION

Roppongi Hills North Tower 7F, 6-2-31 Roppongi, Minato-ku, Tokyo 106-0032, JAPAN
 Tel: +81-3-5786-6796 Fax: +81-3-5786-6778
 Web Site: www.ipba.org E-mail: ipba@tga.co.jp

Dear IPBA Member:

The Inter-Pacific Bar Association ("IPBA") Scholarship Committee will be holding a Silent Auction fundraising event in April 2011 at the IPBA's Annual Meeting and Conference to be held in Kyoto/Osaka, Japan.

All of the funds raised from this event will be used to support the IPBA Scholarship Committee's work, which is to provide scholarships to young lawyers and lawyers from developing countries to attend the IPBA's Annual Meeting and Conference.

The IPBA Scholarships were initially offered in 1998 to honor the memory of Mr. M.S. Lin of Taipei, who was one of the founders of and a Past President of the IPBA. There are two categories of scholarship:

- 1) for lawyers from developing countries to provide information and support to lawyers in those countries; and
- 2) for lawyers under 35 years of age from any jurisdiction to encourage development of those young lawyers in their work.

We are in the process of collecting donations for this event and we request your assistance in making the IPBA Scholarship Committee Silent Auction a success. By donating an item, you'll be making a contribution that will help the IPBA Scholarship Committee provide a worthwhile learning opportunity for a young or developing country lawyer who would not otherwise be able to attend the IPBA's Annual Meeting and Conference.

Additionally, you'll benefit from exposure of your firm or company's name in materials provided to those who attend the IPBA Annual Conference. Donors will be well publicized and your donation will be on display during the event.

Please consider donating an item to support the continued work of the IPBA Scholarship Committee. Donations will be accepted until April 1, 2011. Please see our website <http://ipba.org> for our donation form under "Scholarships" and then "Silent Auction" or you may contact mark@shklovwonglaw.com, to answer any questions regarding participation in the IPBA Scholarship Committee Silent Auction.

Anything and everything is welcome! The monetary value of the item does not have to be great. Please be creative and have fun with your donations. The goal of this project is to support a worthwhile program and your involvement is important.

Very truly yours,

The IPBA Scholarship Committee



Noor Meurling
Co-Chair



Varya Simpson
Co-Chair



Mark Shklov
Vice-Chair



Richard Goldstein
Vice-Chair

SCHOLARSHIP COMMITTEE SILENT AUCTION DONATION LIST

As of November 10, 2010, the following items have already been donated by or through IPBA Members for the Scholarship Program Silent Auction to be held at the IPBA Annual Meeting and Conference in Kyoto/Osaka in April 2011:

- An exquisite Japanese cuisine dining experience for four (4) in Tokyo, Osaka, Kyoto or Kobe, donated and to be personally hosted by Shiro Kuniya;
- A traditional Korean porcelain writing stand by well-known Korean artist Song-Kang, donated by Sang-Kyu Rhi;
- A personally autographed copy of *The Idea of Justice* by Nobel Prize Winner Amartya Sen, contributed by Lalit Bhasin;
- A scenic 2- to 3-hour flight through the majestic Swiss Alps for two (2) adults, with private chauffeured limousine from Zurich City, provided by Urs Lustenberger;
- A selection of rare first edition books written by or about Winston Churchill from the private collection of Richard Goldstein;
- All immigration legal services required to prepare and file a non-immigrant U.S. visa for a qualified person to temporarily visit or work in the U.S., provided by Goldstein & Lee, P.C.;
- Two-day all inclusive golf packages for two (2) couples at the prestigious Katsuura Tokyu Golf Club in lovely Katsuura, Japan, the birthplace of the IPBA, as guests of Mr. & Mrs. Miyake;
- An elegant traditional Inuit "Dancing Bear" stone sculpture hand-crafted by an Inuit artist from Cape Dorset, Canada, donated by the law firm of Stikeman Elliott LLP;
- Private all-day tour for two (2) people of the magnificent San Francisco Area, including lunch or dinner at a fine SF Restaurant, hosted by Varya Simpson/SNR Denton;
- A delicious collection of fine hand-crafted chocolates from all over the world, donated by IPBA members;
- Two limited edition signed and numbered lithographs, "Hawaiian Serenade" and "Kapiolani Park", by Artist Guy Buffet, donated by Shklov & Wong, LLP;
- A week's stay at secluded Big Mountain Estate, a luxury vacation home near the picturesque cowboy town of Whitefish, Montana, as guests of Mark & Cheryl Shklov;
- Deluxe accommodations as guests of several first class hotels in Paris, Tokyo, Kyoto, Boston and New York; and
- Specially selected bottles of excellent wines contributed by IPBA Members from vineyards all over the world.

More information about these items and other donations which will be auctioned at the Scholarship Program Silent Auction will be provided as we get closer to the date of the IPBA Annual Meeting and Conference. To donate items for the Silent Auction, please contact Mark Shklov at mark@shklovwonglaw.com.

Social Programs

Reception for Women Business Lawyers, IPBA Scholars, and New Members

Date: Thursday, April 21, 2011
 Time: 16:00-18:00
 Venue: Kyoto International Conference Center (ICC Kyoto)

This reception will be held to welcome our IPBA Scholars, New Members and Women Business Lawyers, and is open to all members. The WBLC (Women Business Lawyers Committee) will invite a prominent guest speaker, coordinated by Ms. Yoshiko Koizumi, a partner of City-Yuwa Partners, to epitomize the success of women in the legal world. The address will be followed by an Exchange on Cultural Intrigues, an hour-long interactive session over refreshments that highlights the interesting facets of various nations and traditions which are sometimes misunderstood, to facilitate better understanding and greater accommodation across cultures.

Welcome Reception

Date: Thursday, April 21, 2011
 Time: 18:00-21:00
 Venue: Kyoto International Conference Center (ICC Kyoto)

ICC Kyoto boasts an exquisite Japanese-style garden that faces the Takaragaik Lake in a stunning example of water and nature in harmony. Please join us for a welcome reception held at ICC Kyoto's lobby and famous garden to gather with and meet Conference participants. Renew acquaintances with colleagues and friends while taking in the beauty of the lake from one of ICC Kyoto's eight bridges. The reception will feature a geisha performance and will be preceded by a tea ceremony which is free of charge and available to everyone between 14:00-18:00.



Kyoto Night

Date: Friday, April 22, 2011
 Time: 19:00-21:00
 Venues: Ninna-ji Temple (a UNESCO World Heritage Site), or Kodai-ji Temple and The Garden Oriental Kyoto

Join us for dinner at your choice of one of these two beautiful historic temples. *Please kindly note that as space is limited at each venue, you are asked to choose either Ninna-ji Temple or Kodai-ji Temple in the "Kyoto Night" section of our Registration website at <http://www.ipba2011.org/>. Due to the limited capacity of each venue, reservations will be accepted on a first-come, first-served basis.*

Ninna-ji Temple was founded in 888 and designated a UNESCO World Heritage Site in 1994. Nearly all of the buildings that comprise the Ninna-ji Temple complex have been honored as National Treasures or Important Cultural Properties, and Ninna-ji is also home to the Omuro School of Flower Arrangement (Ikebana). The temple's collection includes over 600 spectacular works of sculpture, painting, calligraphy, lacquer, and ceramics, which are on display only twice a year. (For those of you interested in seeing the collection, it will be on display from April 1st to May 29th, from 9:00-16:30 at the "Reiho-kan" Building, for an admission fee of JPY 500.)

Kodai-ji Temple was established in 1606 by the widow of Hideyoshi Toyotomi, Japan's great warrior and political unifier. The temple itself is famous for its array of "Kodai-ji Makie" (Japanese lacquer with gilded patterns in the distinctive Kodai-ji style) and for its garden, which was designated a historical site and place of scenic beauty by the Japanese government. Kodai-ji is located in the heart of Gion, Kyoto's bustling geisha district, lined with wooden "machiya" (townhouses) and "ochaya" (teahouses where geisha entertain). After visiting Kodai-ji, we will adjourn to the adjacent Garden Oriental Kyoto for dinner. Formerly the private residence of Seiho Takeuchi, one of the founders of "nihonga" (Japanese-style painting), the Garden Oriental is the perfect place to unwind and become acquainted with Kyoto's natural beauty and formidable artistic traditions.



Gala Dinner

Date: Saturday, April 23, 2011
 Time: 19:00-21:00
 Venue: The Westin Miyako Kyoto

Our annual gala will be held at the Westin Miyako, one of Kyoto's most beautiful modern hotels. The Westin Miyako is nestled amongst rolling hills and epitomizes the perfect fusion of tradition and modernity. The gala event will feature an elegant multi-course dinner, traditional Japanese music, Silent Auction (see Page 16), and the performance of a Noh play entitled "Shakkyo," about finding paradise.

Although we have no limitation on seating capacity, reservations are required to participate in the Gala Dinner through our Registration website at <http://www.ipba2011.org/>.



Optional Excursion

Panasonic Factory Visit

Date: Thursday, April 21, 2011
 Time: 11:30-16:00

Point of Departure and Point of Arrival: Kyoto International Conference Center
 Registration Fee: JPY 3,000 (lunch box included)
 Number of Participants: 100
 Tour Coordinator: Shiro Kuniya (Oh-Ebashi LPC & Partners, Osaka/Tokyo),
 Eriko Hayashi (Oh-Ebashi LPC & Partners, Shanghai/Tokyo)

This tour will take you to an impressive factory of Panasonic located near the Lake Biwa, the largest lake in Japan, where various kinds of home appliances are being developed and manufactured. Panasonic, a Japanese company and world leader in innovative technology, is trying to promote and achieve a low-carbon society by manufacturing eco-friendly products in line with its corporate philosophy of "contribution to social development and rich life through creation." Through this factory visit, you can experience the eco-friendly world envisioned by Panasonic as well as meet and network with other participants, while enjoying the beautiful scenery of Lake Biwa.

To make reservations for this factory visit, please access the website below no later than March 31, 2011 at 17:30 (Japan Standard Time). Registration will be accepted on a first-come, first-served basis.
<http://www.ipba2011.org/>

This information is subject to change.
 Please check the IPBA 2011 Kyoto/Osaka website (www.ipba2011.org) for the latest Information.

Accompanying Persons' Programs Golf Tournaments

Accompanying Persons' Programs

Gion (Kyoto) 1-Day Tour (Friday, April 22, 2011, from 10:00 to 15:30)

Kyoto International Conference Center –strolls around the Gion area (including the Hanami-koji street) – Lunch at Gion Hanasato – view of Miyako Odori at Gion Kobu Kaburenjo – back to Kyoto International Conference Center

Participation Fee: TBA

Sights: Hanami-koji street and Miyako Odori

- ① The most popular street in the Gion area, Hanami-koji is known to be home to geishas and geisha apprentices, and is filled with various "ochaya" teahouses, restaurants and shops. A walk through this street lined with traditional "machiya" style merchant houses is an experience in itself, but with luck, you may come across the geisha apprentices heading towards their respective lessons or having tea.
- ② The history of Miyako Odori, or the "dance of the Imperial City," goes back to the Meiji restoration (1862-1869), when Emperor Meiji moved the capital from Kyoto to Edo (the present day Tokyo). Initially a countermeasure against the city's decline and to exhibit the lively arts of Kyoto, these performances by the geisha and geisha apprentices continued to gain recognition for their excellence in traditional Japanese skills, such as dance, song, traditional instruments and the tea ceremony, all of which you will experience in this tour.

We're currently looking into setting up a lounge for your use at ICC Kyoto, and also putting together other exciting program options for accompanying persons. Details will be uploaded on our website shortly, so please visit our website (<http://www.ipba2011.org/>) again soon, or alternatively, be on the lookout for our announcement via email!

Golf Tournaments

GT-1 Pre-Conference Golf Tournament

Date: Thursday, April 21

Participation Fee: JPY 26,000. Fee includes the cost of golf carts, caddies, course usage, transportation to and from the course, prizes, breakfast, lunch and beverages.

GT-2 IPBA Cup (Ted Regala Cup and Lee Suet-Fern Cup)

Date: Monday, April 25

Participation Fee: JPY 30,000. Fee includes the cost of golf carts, caddies, course usage, transportation to and from the course, prizes, breakfast, lunch, beverages and a party.

Location (both GT-1 and GT-2): Seta Golf Course. Address: 12 Setahashimoto-cho, Otsu-shi, Shiga 520-2125
Set in a rolling terrain overlooking Lake Biwa and Mt. Hiei, the Seta Golf Course boasts of a highly strategic and distinctive 54-hole golf course, among which, the eastern and northern courses were designed by the renowned golf course designer, Seiichi Inoue. The eastern course was home to the Mizuno Classic in 2005, an official Ladies Professional Golf Association (LPGA) tournament. All three courses consist of long fairways, and players are welcome to enjoy the sensation of taking robust drives.

Transportation: A bus will pick participants up at 6:30 a.m. at Grand Prince Hotel Kyoto first, then at Kyoto Hotel Okura and finally at the Westin Miyako Kyoto. Scheduled time of arrival at the golf course: 8:00 a.m. (tee off at 9:00 a.m.).

Rental of equipment and shoes: At an additional fee, a limited number of equipment and shoes are available for rental on a first-come, first-served basis. Please use the contact information appearing below for details and reservations. Please note that the largest available shoe size is 28 cm/Europe 44/USA 10.5.

JTB Western Japan Corp., MICE Center IPBA2011 Desk
Tel: +81-6-6252-2861 Fax: +81-6-6252-2862 E-mail: m_takewaka115@west.jtb.jp
Office Hours: 9:30-17:30 (Japan Standard Time, weekdays only)

Pre/Post-Conference Optional Tours managed by JTB

Pre-Conference Tours (Minimum number of participants: 20)

PT-1: Mt. Fuji & Hakone 2-Day Tour (beginning on Wednesday, April 20, 2011 at 9:00; arriving in Kyoto on Thursday, April 21, 2011 at 15:00)

April 20: Hamamatsucho Bus Terminal – Fuji Visitors' Center – 5th Station of Mt. Fuji – Lake Ashi – Mt. Komagatake – stay overnight at Hakone Hotel Kowakien.

April 21: Hakone – free time for strolls around the Hakone area – Odawara City – depart for Kyoto on the Shinkansen ("bullet train").

Participation Fee: JPY 41,000 (This includes lunch on Wednesday, double occupancy accommodations, admission to all sights, and guide fees. There is an additional charge of JPY 7,500 for single occupancy.)

Sights: Mt. Fuji, Lake Ashi, Mt. Komagatake and Hakone.

- ① Mt. Fuji: At 3,776 meters tall, Mt. Fuji is the highest mountain in Japan as well as a national symbol. With a conical shape boasting symmetry of Platonic proportions, Mt. Fuji was once considered sacred and continues to attract vast numbers of visitors for both religious and recreational purposes. Visitors can easily reach the 5th Station by car and, once there, can bask in the magnificent view of both Mt. Fuji and the surrounding environs.
- ② Lake Ashi: Lake Ashi fills the giant crater formed by the Hakone Volcano. Enjoy a scenic cruise around the lake on a pleasure boat, from which you can take in the highest peak of Mt. Fuji and the famous vermilion Shinto "torii" (gate) of Hakone Shrine, which was built to appear as if floating on water.
- ③ Mt. Komagatake: A 5-minute ride on the Mt. Komagatake Aerial Cableway will whisk you up to the top of Mt. Komagatake. In clear weather, you can enjoy a magnificent panoramic view of Mt. Fuji and Lake Ashi.
- ④ Hakone: Hakone has been one of Japan's most famous and popular hot-spring resort destinations since the 9th century. Its illustrious "Seventeen Spas" each feature a different variety of hot spring. Hakone is also famous for the ancient Hakone Checkpoint, used under the Tokugawa Shogunate to control the flow of travellers in and out of Edo (the present-day Tokyo), and the Hakone Shrine, which has stood in its present location since 757.
- ⑤ Hakone Hotel Kowakien: Stay overnight at the charming Hakone Hotel Kowakien nestled in Hakone's countryside. In addition to its 10,000 square meters of tranquil Japanese gardens, originally commissioned for the influential Mitsui family's private villa, you can enjoy the hotel's outdoor "onsen" (hot springs), rich with minerals and offering a view of the gardens. With a variety of Western, Chinese, and traditional Japanese restaurants on the premises, the Kowakien offers plenty of tempting dining options.

PT-2: Kyoto 1-Day Tour (Thursday, April 21, 2011, from 8:30 to 15:00)

Participation Fee: JPY 10,000 (This includes transportation, lunch, admission fees, and a guide.)

Sights: Kinkaku-ji Temple (the "Golden Pavilion"), Nijo Castle, and Kiyomizu Temple.

- ① Kinkaku-ji Temple: Kinkaku-ji (formally named "Rokuon-ji") is a UNESCO World Heritage Site and one of the most popular and iconic sightseeing spots in Kyoto, as well as the namesake of Yukio Mishima's famous novel. With its exquisite Japanese garden, 600-year-old pine tree, and two of its three stories covered in pure gold leaf, Kinkaku-ji attracts visitors from all over the world.
- ② Nijo Castle: Built in 1603 as the Shogun's Kyoto residence, Nijo Castle has retained its original architectural style for over 400 years. Although renowned for its gorgeous interior wood carvings, gold leaf and painted sliding doors and walls, Nijo Castle is perhaps best known for its unique "Nightingale Floor" security system, which causes the floors to make chirping noises when walked on to prevent undetected passage through the castle's many corridors.
- ③ Kiyomizu Temple: Saunter along a winding cobblestone lane lined with restaurants and small shops selling traditional sweets and souvenirs, a destination in itself, until you reach the main gate of Kiyomizu Temple, another UNESCO World Heritage Site. Well-known as a holy temple for religious pilgrims for well over 1,000 years, Kiyomizu Temple is famous for its sacred waterfall ("kiyomizu" means "clear water") and the fact that not one nail was used in its construction. The veranda of the main hall offers majestic, sweeping views of the entire city of Kyoto.



Post-Conference Tours (Minimum number of participants: 20)

PT-3: Hiroshima & Kurashiki 2-Day Tour (beginning on Monday, April 25, 2011 at 8:00; arriving in Kyoto on Tuesday, April 26, 2011 at 19:00)

April 25: Depart from Kyoto Station on the Shinkansen (“bullet train”) – Hiroshima Station – Miyajima Island (Itsukushima Shrine) – Peace Memorial Park – stay overnight at Grand Prince Hotel Hiroshima.

April 26: Grand Prince Hotel Hiroshima – Kurashiki (1.5-hour ride on a private bus) and Ohara Museum of Art – Korakuen Garden – back to Kyoto (4-hour ride on private bus).

Participation Fee: JPY 48,500 (This includes lunch on Monday, double occupancy accommodations, admission to all sights, and all guide fees. There is an additional charge of JPY 5,250 for single occupancy.)

Sights: Miyajima Island (Itsukushima Shrine), the Peace Memorial Park (Atomic-Bomb Dome, Peace Memorial Museum), Kurashiki (a walk around the historic, scenic town of Kurashiki and the Ohara Museum of Art), and Korakuen Garden.

- ① Miyajima Island: Miyajima Island, also known as Itsukushima Island, is home to a UNESCO World Heritage Site-designated grand Shinto shrine. Itsukushima Shrine features a dramatic vermilion “torii” (gate) that appears as if floating in the sea. Both the shrine and the island have long been regarded as sacred, and the view of Miyajima against the backdrop of Mt. Misen is said to be one of the three most beautiful sights in Japan.
- ② Peace Memorial Park: The Peace Memorial Park’s Atomic-Bomb Dome, a World Cultural Heritage Site, symbolizes not only Hiroshima but also a call for world peace. After strolling through the Park near the hypocenter of the A-Bomb blast and observing the Children’s Peace Monument housing Sadako’s famous cranes, you will have the opportunity to view incredible relics preserved from the tragic day of the Hiroshima bombing at the Hiroshima Peace Memorial Museum.
- ③ Kurashiki: Kurashiki, designated by the Japanese government as an important “Traditional Structures Conservation Area,” is known for its old merchant quarters (the “Bikan area”) characterized by 17th-century white wooden warehouses with traditional black tiles. The Ohara Museum of Art, Japan’s first Western art museum, boasts paintings by El Greco, Gauguin, Matisse, Renoir, and Monet, as well as Asian and contemporary art. Enjoy strolling beneath the weeping willows as you walk along the koi-filled Kurashiki River that runs through the old town.
- ④ Korakuen Garden: Korakuen Garden, one of Japan’s Three Great Gardens, incorporates nearby Okayama Castle into its 133,000 square meter stretch of garden vista. Korakuen Garden, completed in the 17th century, was designed in the “kaiyu” (scenic promenade) style, presenting visitors with new views at every turn of the path along its lawns, ponds, hills, teahouses, and streams.



PT-4: Nara 1-Day Tour (Monday, April 25, 2011, from 8:30 to 17:30)

Participation Fee: JPY 12,500 (This includes transportation, lunch, admission to all sights, and guide fee.)

Fee:

Sights: Horyu-ji Temple, Todai-ji Temple, Nara Park, and Kasuga Shrine.

- ① Horyu-ji Temple: Horyu-ji Temple is located in the northwest of Nara, one of Japan’s ancient capital towns. The temple is a UNESCO World Heritage Site and contains a number of government-designated National Treasures. Horyu-ji was founded in the 7th century and is best known for its five-story pagoda and the adjacent main hall, the world’s oldest existing wooden structures. The pagoda is said to enshrine a fragment of the Buddha’s bone.
- ② Todai-ji Temple: Todai-ji is another UNESCO World Heritage Site. Its Great Buddha Hall, the largest wooden building in the world, houses the famous “Daibutsu” (Great Buddha), the world’s largest bronze Buddha statue. A pair of guardian statues, each over 8 meters tall and carved in 1203, guard the temple’s south gate.
- ③ Nara Park: The 1,300-acre Nara Park is also known as “Deer Park,” as a result of the 1,200 deer, regarded as messengers of gods, that roam the grounds freely. Do not be surprised if you are approached by deer in search of “shika senbei” (deer crackers) – the deer are friendly (and hungry) creatures.
- ④ Kasuga Shrine: Kasuga Shrine, originally built in 768 by the powerful Fujiwara aristocracy, is one of the best known Shinto shrines in Nara and a UNESCO World Heritage Site. Surrounded by ancient forests and adjacent to the Man’yo Botanical Garden, Kasuga Shrine features 3,000 stone and bronze lanterns along its approach and within its grounds.



Photo: Nara City Sightseeing Information Center

How to Make Reservations

To make reservations for Pre/Post-Conference Tours and Accompanying Persons’ Programs, please access the website below and make all necessary payments **no later than April 6, 2011 at 17:30 (Japan Standard Time)**. Please note that the deadline for golf tour reservations is **March 20, 2011 at 17:30 (Japan Standard Time)**.

<https://amarys-jtb.jp/IPBA2011/>

JTB Western Japan Corp., MICE Center IPBA2011 Desk

Tel: +81-6-6252-2861 Fax: +81-6-6252-2862 E-mail: m_takewaka115@west.jtb.jp

Office Hours: 9:30-17:30 (Japan Standard Time, weekdays only)

Cancellations

In the event of any cancellation, written notification must be sent to JTB. The following cancellation fees will be deducted before making any refunds.

Golf Tours:	21 or more days prior to play day	No fee
	11 to 20 days prior to play day	10% of Participation Fee
	2 to 10 days prior to play day	20% of Participation Fee
	1 day prior to or on day of play	30% of Participation Fee

Pre/Post-Conference Tours:	21 or more days prior to tour start date	No fee
	8 to 20 days prior to tour start date	20% of Participation Fee
	2 to 7 days prior to tour start date	30% of Participation Fee
	1 day prior to tour start date	40% of Participation Fee
	Prior to departure on tour date	50% of Participation Fee
	After departure, or no-show	100% of Participation Fee

Registration

Online Registration for IPBA 2011 is now available at <http://www.ipba2011.org> or you may submit the registration form enclosed in this brochure via postal mail, fax, or email to the Conference Secretariat. Please make sure that your name and membership number appear on the registration form to ensure accurate administration processing. Your cooperation is much appreciated.

Registration Fees (JPY)

	Early Bird on or before Jan. 31, 2011	Regular Feb. 1, 2011-Mar. 31, 2011	On-Site Apr. 1, 2011 or later
IPBA Member*	137,500	155,000	167,500
Non-IPBA Member	165,000	180,000	190,000
Young Lawyer Member**	120,000	135,000	145,000
Corporate Counsel***	60,000	70,000	80,000
Accompanying Persons****	60,000	70,000	80,000

* IPBA Member: You must be a member in good standing for the 2011 membership year at the time of the Conference. To qualify for the IPBA Member fees, please register to become a member first or update your membership. See the IPBA web site for online membership registration and renewal (www.ipba.org).

** Young Lawyer Member: This category applies to members younger than 30 years old as of January 1, 2011. You must be a member in good standing for the 2011 membership year at the time of the Conference. If you would like to qualify for the IPBA Young Lawyer registration Member Conference fees, please register to become a member first or update your membership. See the IPBA web site for online membership registration and renewal (www.ipba.org).

*** This category applies to Corporate Counsel and employees of legal departments of companies.

**** Only registered accompanying persons are eligible to participate in the social programs under Entitlements for Accompanying Persons and optional excursions. However, no member of the legal profession may be registered as an accompanying person.

Method of Payment

We accept only credit card payments in principle. Please consult with the Conference Secretariat if you are not able to pay by credit card.

Accepted Credit Cards: Visa, MasterCard or American Express. No other cards are accepted. Credit cards will be charged in Japanese Yen. Your credit card company will convert the fees to the currency of your credit card so the amount may not necessarily match exactly the amounts listed above.

Entitlements of Delegates:

- Opening Ceremony and Plenary Session
- Special Sessions and Committee Programs
- Coffee Breaks
- Lunches on April 22 – 24
- IPBA Scholars, New Members and Women Business Lawyers Reception on April 21
- Welcome Cocktail Reception on April 21
- Kyoto Night on April 22
- Gala Dinner on April 23
- Conference Bag and Materials

* Some of the delegate sessions may be eligible for CLE credits. Please check the Conference website, www.ipba2011.org, for more information.

Entitlements of Accompanying Persons:

- IPBA Scholars, New Members and Women Business Lawyers Reception on April 21
- Welcome Reception on April 21
- Kyoto Night on April 22
- Gala Dinner on April 23

* Social function registration will not be confirmed until full payment is received by the Conference Secretariat.

Cancellation Policy

All cancellations made in writing and received by the Secretariat by March 31, 2011 will be eligible for a full refund minus a JPY5,000 administration fee. No refunds will be issued for cancellations received after this date or for no-shows.

Transfer of Registration/Substitution

Your registration may be transferred to another individual upon written request submitted to the Conference Secretariat on or before March 31, 2011.

Registration Check-In

The registration desk will be located in the Entrance Lobby in Kyoto International Conference Center and will be open during the following dates and hours:

Thursday, April 21	13:00-19:00
Friday, April 22	8:00-18:00
Saturday, April 23	8:00-18:00
Sunday, April 24	8:00-14:00

Badges

For security reasons, name badges must be worn at all times during the Conference and at social functions. Your name badge is your pass for the Conference Center.

Dietary Requests

We can only accommodate dietary requirement due to religious or medical reasons on a limited basis. Please specify the requirement on the registration form. We are unable to cater to dietary requirements other than for the reasons above. Thank you for your understanding.

Golf Tournaments

- 1) Thursday, April 21 Pre-Conference Golf Tournament
- 2) Monday, April 25 IPBA Cup (Ted Regala Cup and Lee Suet-Fern Cup)

Visa Requirements

All delegates are responsible for checking visa entry requirements for Japan. Applications can take up to several months to process and some delegates must apply for their visa in person at their local Japanese embassy or consulate. Please contact your local embassy for entry formalities and apply for any required visa well in advance.

The Conference Secretariat is unable to issue a letter of invitation to delegates prior to receipt of the registration form and full payment of fees.

Accessibility for the Disabled

Kyoto International Conference Center is accessible by wheelchair. Please notify us in advance if you require special assistance.

Conference Secretariat

IPBA 2011 Annual Meeting and Conference
c/o Congress Corporation
3-6-13 Awajimachi, Chuo-ku, Osaka 541-0047, Japan
E-mail: ipba2011@congre.co.jp
Fax: +81-6-6229-2556
<http://www.ipba2011.org>

Conference Venue

Kyoto International Conference Center (ICC Kyoto)
<http://www.icckyo.or.jp/>

Approximately a 5-minute walk from Kokusai Kaikan Station, the northern-most station on the Subway Karasuma Line, directly connected through underground passage.

ICC Kyoto is located at the foot of the evergreen Mt. Hiei, and is surrounded by the natural beauty of the four seasons. Opened in 1966, the ICC Kyoto is the first national conference facility in Japan, and boasts that The Third Session of the Conference of the Parties to the United Nations Framework Convention on Climate Change (COP3) adopted "Kyoto Protocol" at its main hall in 1997.



- 1 **Grand Prince Hotel Kyoto**
3-minute walk to the venue.
- 2 **Hotel Granvia Kyoto**
20-minute subway ride from Kyoto Station and 5-minute walk to the venue.
- 3 **Kyoto Brighton Hotel**
14-minute subway ride from Karasuma Oike Station and 5-minute walk to the venue.
- 4 **The Westin Miyako Hotel Kyoto**
24-minute subway ride from Keage Station and 5-minute walk to the venue.
- 5 **Kyoto Hotel Okura**
19-minute subway ride from Kyoto Shiyakusho-mae Station and 5-minute walk to the venue.
- 6 **Hotel Monterey Kyoto**
14-minute subway ride from Karasuma Oike Station and 5-minute walk to the venue.
- 7 **Kyoto Royal Hotel & Spa**
19-minute subway ride from Kyoto Shiyakusho-mae Station and 5-minute walk to the venue.
- 8 **Mitsui Garden Hotel Kyoto Shijo**
16-minute subway ride from Shijo Station and 5-minute walk to the venue.
- 9 **Hearton Hotel Kyoto**
14-minute subway ride from Karasuma Oike Station and 5-minute walk to the venue.
- 10 **Viainn Kyoto Shijo-Muromachi**
16-minute subway ride from the Shijo Station and 5-minute walk to the venue.

Accommodations

IPBA 2011 Conference Travel Agency

JTB Western Japan, Kyoto Office has been appointed as the official travel agent for the Conference and will handle all related travel arrangements, including hotel accommodations and tours.

HOTEL ACCOMMODATIONS

JTB has blocked hotels in Kyoto for the duration of the Conference. Reservations will be accepted on a first-come, first-served basis.

Please note that some hotels have weekend rates (indicated below in parenthesis), applicable to Saturday, April 23, 2011. All room rates include tax and service charge.

Name of Hotel	Room charge (JPY)						Internet LAN access	Restaurant	Bar	Pool	Gym	Business facilities	Non-smoking rooms
	Single		Twin										
	No meal	With breakfast	Single Occupancy		Double Occupancy								
No meal	With breakfast	No meal	With breakfast	No meal	With breakfast								
Grand Prince Hotel Kyoto	—	—	19,000 (21,000)	21,000 (23,000)	20,000 (24,000)	24,000 (28,000)	1,000/day	○	○	×	×	○	Available
5-minute walk from Kokusai Kaikan Station on the Subway Karasuma Line.													
Hotel Granvia Kyoto	—	—	28,000	30,500	30,000	35,000	Free	○	○	○	○	○	Available
1-minute walk from JR Kyoto Station, or 3-minute walk from Kyoto Station on the Subway Karasuma Line.													
Kyoto Brighton Hotel	—	—	24,000	26,000	26,000	30,000	Free	○	○	×	×	○	Available
8 minutes on the hotel's free shuttle bus from Karasuma Oike Station on the Subway Karasuma Line or the Subway Tozai Line, or 8-minute walk from Imadegawa Station on the Subway Karasuma Line.													
The Westin Miyako Kyoto (Deluxe Room)	—	—	33,000 (38,000)	—	41,000 (47,000)	—	1,575/24 hours	○	○	○	○	○	Available
The Westin Miyako Kyoto (Superior Room)	—	—	27,800 (29,800)	—	34,600 (38,600)	—	1,575/24 hours	○	○	○	○	○	Available
20 minutes on the hotel's free shuttle bus from JR Kyoto Station, or 2-minute walk from Keage Station on the Subway Tozai Line.													
Kyoto Hotel Okura	19,000	21,500	26,000	28,500	30,000	35,000	Free	○	○	○	○	○	Available
Located adjacent to Kyoto Shiyakusho-mae Station on the Subway Tozai Line.													
Hotel Monterey Kyoto	14,000	15,000	15,000	16,500	20,000	22,000	Free	○	○	×	×	×	Available
3-minute walk from Karasuma Oike Station on the Subway Karasuma Line or the Subway Tozai Line, or 5-minute walk from Karasuma Station on the Hankyu Kyoto Line.													
Kyoto Royal Hotel & Spa	11,000	12,000	17,000	18,000	18,000	20,000	Free	○	○	×	×	×	Available
1-minute walk from Kyoto Shiyakusho-mae Station on the Subway Tozai Line.													
Mitsui Garden Hotel Kyoto Shijo	9,000 (9,500)	10,000 (10,500)	12,000 (12,500)	13,000 (13,500)	15,000 (16,000)	17,000 (18,000)	free	○	×	×	×	×	Available
6-minute walk from Shijo Station on the Subway Karasuma Line, or 6-minute walk from Karasuma Station on the Hankyu Kyoto Line.													
Hearton Hotel Kyoto	10,000	11,000	12,000	13,000	15,000	17,000	Free	○	×	×	×	×	Available
2-minute walk from Karasuma Oike Station on the Subway Karasuma Line.													
Via Inn Kyoto Shijo-muromachi	—	7,000	—	—	—	—	Free	×	×	×	×	×	Available
4-minute walk from Shijo Station on the Subway Karasuma Line, or 4-minute walk from Karasuma Station on the Hankyu Kyoto Line.													

1. Grand Prince Hotel Kyoto

Address: 1092-2 Iwakura-hataeda-cho, Takaragaike, Sakyo-ku, Kyoto 606-8505
 Tel: +81-75-712-1111 Hotel Rank: A
<http://www.princehotels.com/en/kyoto/>
 Facilities: 5 restaurants (including Japanese, French/Teppan-yaki, and Chinese cuisines), bar, lounge, souvenir shop, copy/Internet facilities, beauty & wellness salon, etc.
 Check-in: 13:00 Check-out: 12:00
 The Grand Prince Hotel Kyoto owes its remarkable design to Togo Murano, one of Japan's most celebrated architects, who styled its unique contours to blend seamlessly with the ageless natural beauty of Kyoto. The hotel features spacious guest rooms, elegant banquet halls, restaurants, and a Sukiya-style teahouse in the Japanese garden, for the real Kyoto experience.

2. Hotel Granvia Kyoto

Address: JR Kyoto Station, Karasuma Chuo-guchi, Shiokoji-sagaru, Karasuma-dori, Shimogyo-ku, Kyoto 600-8216
 Tel: +81-75-344-8888 Hotel Rank: A
<http://www.granviakyoto.com/>
 Facilities: 10 restaurants (including French, Italian, Chinese, and 6 different Japanese cuisines), bars, lounge, shops, indoor pool, sauna & jet bath, fitness gym, etc.
 Check-in: 15:00 Check-out: 12:00
 Hotel Granvia Kyoto is an integral part of an architecturally striking masterpiece, the JR Kyoto Station Building, which also includes a department store, museum, musical theater, and a vast underground shopping mall. The hotel offers 535 beautifully decorated rooms, and provides direct and easy access to/from Kansai International Airport and major destinations across Japan.

3. Kyoto Brighton Hotel

Address: Nakadachiuri, Shinmachi-dori, Kamigyo-ku, Kyoto 602-8071
 Tel: +81-75-441-4411 Hotel Rank: A
<http://www.brightonhotels.co.jp/kyoto/en/index.html/>
 Facilities: 2 Japanese restaurants, Chinese restaurant, French restaurant, terrace-style cafe, bar, lounge, shops, aromatherapy healing salon, etc.
 Check-in: 14:00 Check-out: 12:00
 The Kyoto Brighton Hotel has 182 luxurious rooms arranged on six floors around a rectangular corridor overlooking the hotel's atrium-style lobby. Its rooms are spacious and finely decorated. Some rooms have outdoor terraces with fine views of the city and the green hills that surround the city on three sides. Internet access is available in all rooms.

4. The Westin Miyako Hotel Kyoto

Address: Sanjo, Keage, Higashiyama-ku, Kyoto 605-0052
 Tel: +81-75-771-7111 Hotel Rank: A
<http://www.westinmiyako-kyoto.com/>
 Facilities: 7 restaurants (including Chinese, Western-style, Japanese hotpot cuisines), bar, fitness center, souvenir shop, copy/fax/Internet/teleconference facilities, tennis courts, indoor pool, skincare salon, bird watching trail, etc.
 Check-in 15:00 Check-out 11:00
 The Westin Miyako Kyoto enjoys a soothing setting in a Japanese garden. Located near a subway station and not far from downtown Kyoto, guests can relax on premises or explore the vicinity and visit by foot the various temples and shrines which are registered as World Heritage Sites. The hotel offers spacious guest rooms complete with necessary amenities including its signature Heavenly Bed®.

5. Kyoto Hotel Okura

Address: Kawaramachi-Oike, Nakagyo-ku, Kyoto 604-8558
 Tel: +81-75-211-5111 Hotel Rank: A
<http://okura.kyotohotel.co.jp/english/>
 Facilities: Gourmet restaurants (including Japanese, Chinese, and Western cuisines), bar, lounge, Internet facilities, shops, indoor pool, etc.
 Check-in 13:00 Check-out 11:00
 Kyoto Hotel Okura is known for its harmonious blend of both Japanese and western influences, and offers luxurious rooms and gourmet restaurants. Throughout the hotel's history of over one hundred years, it has provided guests with high standards of service, elegance, and attention to detail. The hotel is located in the heart of downtown Kyoto, with breath-taking views of the Higashiyama Mountains, as well as modern and historical city surroundings.

6. Hotel Monterey Kyoto

Address: Sanjo-minami, Karasuma-dori, Nakagyo-ku, Kyoto, 604-8161
 Tel: +81-75-251-7111 Hotel Rank: B
<https://www.hotelmonterey.co.jp/eng/index.html>
 Facilities: French and Japanese restaurants, cafe/bar, spa etc.
 Check-in: 14:00 Check-out: 11:00
 Hotel Monterey Kyoto is approximately 3-minute walk from the nearest subway station, and is conveniently located close to the Kyoto Imperial Palace, Shin-Kyogoku area, Nishiki Market and many other destinations. The hotel offers 327 guest rooms in a 13-story property, and its business-friendly rooms are equipped with high-speed Internet access.

7. Kyoto Royal Hotel & Spa

Address: Sanjo-agaru, Kawaramachi, Nakagyo-ku, Kyoto 604-8005
 Tel: +81-75-223-1234 Hotel Rank: B
<http://www.ishinhotels.com/kyoto-royal/en/index.html>
 Facilities: Restaurant, bar, spa, shops, etc.
 Check-in: 14:00 Check-out: 11:00
 Located at Kawaramachi Street, Kyoto's main avenue of restaurants and entertainment, the hotel provides easy access to the city's sites including Nijo Castle, Kiyomizu Temple, Kinkaku-ji Temple, and Ginkaku-ji Temple. In addition to its superb spa facilities, the hotel has a wide range of meeting and function rooms.

8. Mitsui Garden Hotel Kyoto Shijo

Address: 707-1 Myodenji-cho, Shijo-sagaru, Nishi-no-toin-dori, Shimogyo-ku, Kyoto 600-8472
 Tel: +81-75-361-5531 Hotel Rank: C
<http://www.gardenhotels.co.jp/eng/kyoto/>
 Facilities: Japanese restaurant, lounge, public bath, etc.
 Check-in: 14:00 Check-out: 11:00
 Mitsui Garden Hotel Kyoto Shijo is located in the heart of Kyoto City and only 6 minutes away from the nearest subway station and the downtown area. This hotel is very popular for its large public bath.

9. Hearton Hotel Kyoto

Address: Higashi-no-toin-dori Oike-agaru, Nakagyo-ku, Kyoto 604-0836
 Tel: +81-75-222-1300 Hotel Rank: C
<http://www.heartonhotel.com/kyoto/>
 Facilities: Japanese restaurant, cafe-style restaurant, laundromat, Internet facilities, etc.
 Check in: 14:00 Check out: 12:00
 The Hearton Hotel Kyoto is centrally located and provides easy access to Nijo Castle and the Kyoto Imperial Palace. Guest rooms are tastefully decorated and offer a relaxed, at-home feeling. Ideal for groups, families and couples.

10. Viainn Kyoto Shijo-Muromachi

Address: 551-2 Yamabushiyama-cho, Muromachi-dori Nishikikoji-agaru, Nakagyo-ku, Kyoto 604-8156
 Tel: +81-75-256-6111 Hotel Rank: D
<http://kyoto.viainn.com/english>
 Facilities: Laundromat, copy/fax/Internet facilities, etc.
 Check in: 15:00 Check out: 10:00
 Opened in 2007, Via Inn Kyoto Shijomuromachi is located in the heart of Kyoto City and only 4 minutes away from the nearest subway station and the downtown area, including famous temples and shrines. This hotel offers modern facilities at a reasonable price.

How to Make Reservations

To make reservations for hotels, please access the website [Only via website] below and make all necessary payments **no later than April 6, 2011 at 17:30 (Japan Standard Time)**.

<https://amarys-jtb.jp/IPBA2011/>

JTB Western Japan Corp., MICE Center IPBA2011 Desk
 Tel: +81-6-6252-2861 Fax: +81-6-6252-2862 E-mail: m_takewaka115@west.jtb.jp
 Office Hours: 9:30-17:30 (Japan Standard Time, weekdays only)

Cancellations

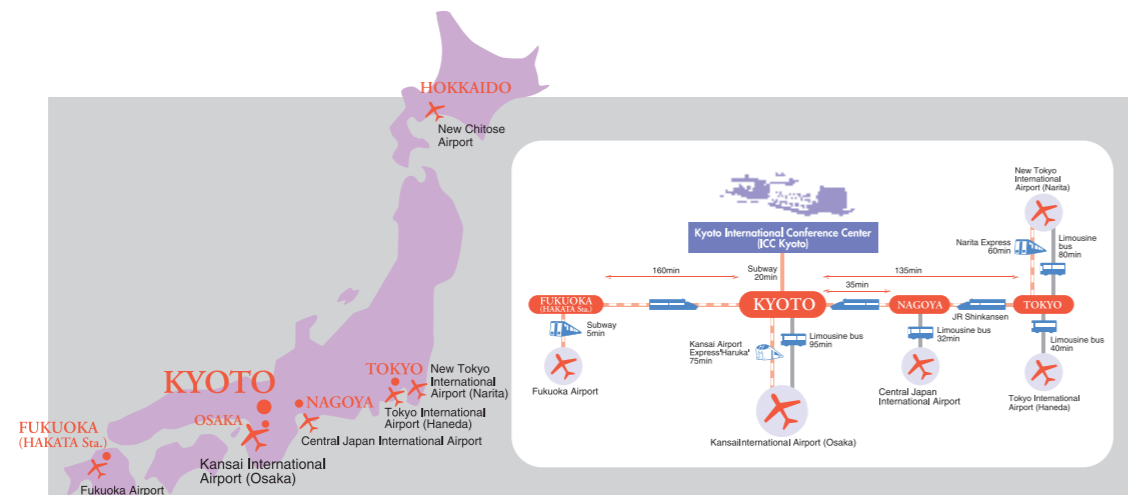
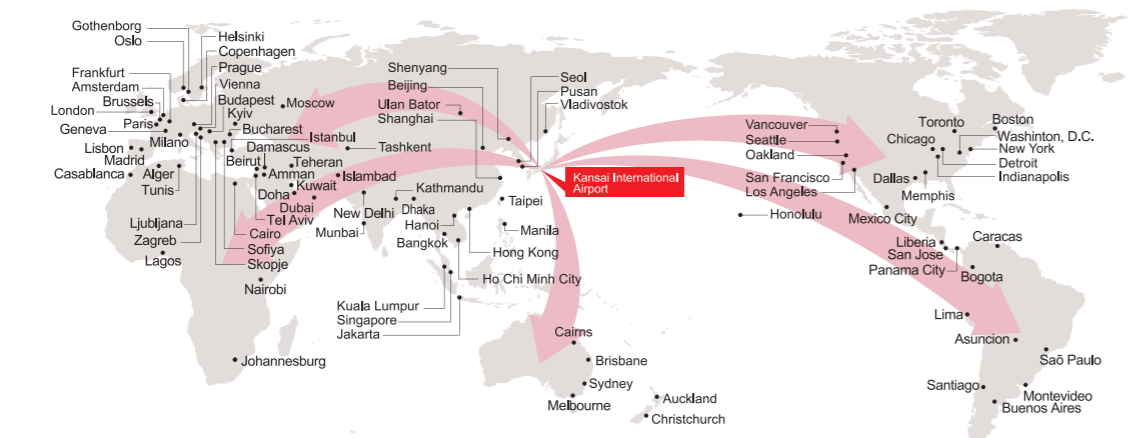
In the event of any cancellation, written notification should be sent to JTB. The following cancellation fees will be deducted before making any refunds.

Hotels:	8 or more days prior to first night of stay	No fee
	2 to 7 days prior to first night of stay	30% of daily room fee
	1 day prior to first night of stay	40% of daily room fee
	On check-in date	50% of daily room fee
	After check-in date, or no-show	100% of daily room fee

Access to Kyoto

Kansai International Airport

Kansai International Airport (KIX), located slightly over an hour from Kyoto, is the most-used international airport in Japan after Tokyo's Narita International Airport. KIX serves 49 airlines from over 70 different cities throughout the world.



Departure place	Transportation	Required time	One-way fare		
			Non-Reserved Car	Reserved Car	Green Car (First class)
Kansai International Airport to Kyoto	JR Haruka Express Train	75 minutes	¥2,980	¥3,490	¥4,220
	Airport Bus	95 minutes	¥2,500	—	—
Tokyo to Kyoto	JR Shinkansen Bullet Train	135 minutes	¥12,710	¥13,520	¥18,160
Nagoya to Kyoto	JR Shinkansen Bullet Train	35 minutes	¥4,930	¥5,640	¥7,800
Hakata (Fukuoka) to Kyoto	JR Shinkansen Bullet Train	160 minutes	¥14,700	¥15,610	¥21,400

Airfares to Japan



JAPAN AIRLINES is the Official Airline for the IPBA 21st Annual Meeting and Conference. Special airfares to Japan will be offered to IPBA 2011 delegates on the JAL page through the congress website.

General Information

Climate

Average temperatures in Kyoto in April range between 8°C and 19°C.

April: Warm daytimes, evening and night time can be cool, clear skies, some precipitation. Sweaters and light jackets sufficient during day, jackets useful evenings.

Passport and Visa

A valid passport is required to enter Japan. In addition, some foreign nationals are required to obtain a visa. For details, please visit the Web site of the Ministry of Foreign Affairs of Japan (http://www.mofa.go.jp/j_info/visit/visa/index.html) and contact the Japanese Consulate or diplomatic mission in your country.

Currency and Money Exchange

The unit of Japanese currency is the Yen. You can buy Yen at foreign exchange banks, other authorized money exchangers, and Kyoto International Conference Center. At international airports, currency exchange counters are usually open during normal office hours. The exchange rate fluctuates daily depending on the money market.

Banks, Credit Cards, and ATMs

Banks are open from Monday to Friday, 9:00-15:00 (closed on Saturdays, Sundays, and national holidays).

International credit cards such as American Express, VISA, Diners Club, and MasterCard are widely accepted at hotels, department stores, shops, and restaurants.

Foreign credit cards and cash cards can be used to make withdrawals in Japan Yen at post office ATMs and Seven Bank ATMs throughout Japan:

- **Post Offices** Cash cards from the Cirrus, PLUS, Maestro, and Visa Electron networks can be used. Accepted credit cards include VISA, MasterCard, American Express, and Diners Club.
- **Seven Bank ATMs** are placed at 7-Eleven convenience stores throughout Japan, and service is available 24 hours a day in English, Korean, Chinese, and Portuguese. Cash cards from the PLUS and Cirrus networks can be used. Accepted credit cards are VISA, MasterCard, American Express, JCB, and China UnionPay.

Electricity

The voltage used throughout Japan is uniformly 100 volts, AC with frequency of 60Hz in Kyoto/Osaka and 50Hz in Tokyo. 2-flat-pin plugs are used in Japan.

Taxes

Consumption tax is a flat rate across the country of 5% on all purchases (at time of writing). There are no additional local Kyoto taxes. The displayed price on goods and services is required by law to be tax-inclusive. Receipts and bills often indicate tax and service charge for your reference.

Telephones & Mobile Phones

The mobile phone protocol in Japan is different from that in other countries; it is best to check with your current provider whether or not you can use your mobile phone in Japan. Mobile phones are available for rental at airports, but not in the city of Kyoto. Public telephones can be found in hotels, the meeting venue, and throughout the city. International calls can be made from NTT grey public telephones and others that are marked as such. Cards can be purchased that allow international telephone calls from any telephone, using a PIN code.

Tipping

Tipping is not practiced in Japan - impeccable service is expected and delivered always. Some restaurants and hotels include a service charge in the bill that you pay. This will always be fully explained. Some shops place a tray near the cash register, this is for you to make your payment and for the change and receipt to be passed back to you, it is not a request for a tip. You pay your restaurant bill as you exit not at the table so not tipping is quite intuitive.

Time Zone

All of Japan is in the same time zone, 9 hours ahead of G.M.T. Daylight Saving Time is not practiced in Japan.

Easter Services

Easter Services are available at several churches in Kyoto. For more information, please visit our website <http://www.ipba2011.org/>.



Sponsors

The Inter-Pacific Bar Association is grateful to the following Japanese and foreign law firms and corporations which have provided sponsorship support for the 21st Annual Meeting and Conference and to the IPBA.

If you are interested in Sponsorship Opportunities, please contact the secretariat at ipba2011@congre.co.jp.

〈As of Nov.30, 2010〉

Diamond Sponsors

〈Law Offices〉

ANDERSON MŌRI & TOMOTSUNE



MIYAKE & YAMAZAKI

MORI HAMADA & MATSUMOTO

NAGASHIMA OHNO & TSUNEMATSU

NISHIMURA
& ASAHI

OH-EBASHI



TMI Associates

〈Companies〉

Panasonic



Platinum Sponsors

〈Law Offices〉



Kikkawa
Law
Offices



〈Companies〉



Gold Sponsors

〈Law Offices〉

BAKER & MCKENZIE
東京青山・青木・狛法律事務所

BINGHAM



色川法律事務所
Irokawa Law Office

小島国際法律事務所

Kejima Law Offices
Attorneys at Law

KYOEI LAW OFFICE
Attorneys at Law, Osaka

Kyowa-partners Law Office



中本総合法律事務所
NAKAMOTO & PARTNERS

小原法律特許事務所
Ohara
Law
Office



OKUNO & PARTNERS



SHEARMAN & STERLING LLP
シヤーマン アンド スターリング外国法事務弁護士事務所



ユアサハラ法律特許事務所
YUASA AND HARA

〈Companies〉

KURABO

MAYEKAWA

Rigaku

Showa Shell Sekiyu K.K.

TOPY TOPY INDUSTRIES, LIMITED

Pearl Sponsors

〈Law Offices〉

Habataki Law Office

〈Companies〉

MITSUI OIL CO.,LTD

NHC New Horizon Capital Co.,Ltd.

SUNSTAR

TOZAI ASSET MANAGEMENT K.K.

Silver Sponsors

〈Law Offices / Lawyers〉

Akio Shinomiya
Kamano Sogo Law Offices
Naoki Idei
Yamamoto Sogo Law Office
Yasushi Ikeda

〈Companies〉

Hirata Corporation
NAGASE & CO., LTD.
NIPPON LIGHT METAL COMPANY, LTD.

Bronze Sponsors

〈Law Offices / Lawyers〉

Global Law Office
Kazumasa Kuboi



An Invitation to Join the INTER-PACIFIC BAR ASSOCIATION

The Inter-Pacific Bar Association ("IPBA") is an international association of business and commercial lawyers who live in, or otherwise have a strong interest in, the Asia-Pacific Region (the "Region"). It was established in April 1991 at an organizing conference held in Tokyo attended by more than 500 lawyers from countries within the Region. Since then, it has grown to become a preeminent legal association in this Region, with membership drawn from throughout the world, and currently has over 1,500 members from over 65 national jurisdictions worldwide.

The growth of the IPBA has been spurred by the tremendous growth of the Asian economies. As companies throughout the region become part of the global economy, they require additional assistance from lawyers in their home country and from lawyers throughout the region. One goal of the IPBA is to help lawyers stay abreast of developments that affect their clients. Another is to provide an opportunity for business and commercial lawyers throughout the region to network with other lawyers of similar interests and fields of practice.

Supported by major bar associations, law societies and other organizations throughout Asia and the Pacific, the IPBA is playing a significant role in fostering ties among members of the legal profession with an interest in the region.

IPBA Activities

The breadth of the IPBA's activities is demonstrated by the number of specialist committees. All of these committees are active and have not only the chairs named, but a significant number of vice-chairs to assist in the planning and implementation of the various committee activities. The highlight of the year for the IPBA is its annual multi-topic four-day conference, usually held in the first week of May each year. Previous annual conferences have been held in Tokyo (twice), Sydney (twice), Taipei, Singapore (twice), San Francisco, Manila, Kuala Lumpur, Auckland, Bangkok, Vancouver, Hong Kong, New Delhi, Seoul, Bali and Beijing attracting as many as 1000 lawyers plus accompanying guests.

The IPBA has organized regional conferences and seminars on subjects such as Practical Aspects of Intellectual Property Protection in Asia (in five cities in Europe and North America respectively) and Asian Infrastructure Development and Finance (in Singapore). The IPBA has also cooperated with other legal organizations in presenting conferences – for example on Trading in Securities on the Internet, held jointly with the Capital Market Forum.

IPBA members also receive our quarterly IPBA Journal, with the opportunity to write articles for publication. In addition, access to the online membership directory ensures that you can search for and stay connected with other IPBA members throughout the world.

Membership

Membership in the Association is open to all qualified lawyers who are in good standing and who live in, or who are interested in, the Asia-Pacific region.

• Standard Membership	JPY 23,000
• Three-Year Term Membership	JPY 63,000
• Corporate Counsel	JPY 11,800
• Lawyers in developing countries with low income levels	JPY 11,800
• Young Lawyers (under 30 years old)	JPY 6,000

Annual dues cover the period of one calendar year starting from January 1 and ending on December 31.

Those who join the Association before August 31 will be registered as a member for the current year. Those who join the Association after September 1 will be registered as a member for the rest of the current year and for the following year.

Membership renewals will be accepted until March 31.

Selection of membership category is entirely up to each individual. If the membership category is not specified in the registration form, standard annual dues will be charged by the Secretariat.

There will be no refund of dues for cancellation of all membership categories during the effective term, nor will another person be allowed to take over the membership for any remaining period.

Corporate Associate

Any corporation may become a Corporate Associate of the IPBA by submitting an application form accompanied by payment of the annual subscription of for the current year.

The name of the Corporate Associate shall be listed in the membership directory.

A Corporate Associate may designate one employee ("Associate Member"), who may take part in any Annual Conference, committee or other programs with the same rights and privileges as a Member, except that the Associate Member has no voting rights at Annual or Special Meetings, and may not assume the position of Council Member or Chairperson of a Committee.

A Corporate Associate may have any number of its employees attend any activities of the Association at the member rates.

• Annual Dues for Corporate Associates	JPY 50,000
--	------------

Registration & Payment of Dues

Online registration and further information can be found on the IPBA website at <http://www.ipba.org>

The following restrictions shall apply to payments. Your cooperation is appreciated in meeting the following conditions.

1. Payment by credit card and bank wire transfer are accepted.
2. Please make sure that related bank charges are paid by the remitter, in addition to the dues.

IPBA Secretariat

Roppongi Hills North Tower 7F, 6-2-31 Roppongi, Minato-ku, Tokyo 106-0032, Japan
Tel: 81-3-5786-6796 Fax: 81-3-5786-6778 E-Mail: ipba@ipba.org Website: www.ipba.org

IPBA Leadership 2010-2011

Officers

President	Suet Fern Lee	Stamford Law Corporation
President-Elect	Shiro Kuniya	Oh-Ebashi LPC & Partners
Vice President	Lalit Bhasin	Bhasin & Co., Advocates
Secretary-General	Gerald A. Sumida	Carlsmith Ball LLP
Deputy Secretary-General	Alan S. Fujimoto	Goodsill Anderson Quinn & Stifel
Program Coordinator	Kevin Y. Qian	MWE China Law Office
Deputy Program Coordinator	Christopher To	Construction Industry Council
Committee Coordinator	Urs Lustenberger	Lustenberger Glaus & Partner
Deputy Committee Coordinator	Ada Ko	Lane Powell PC
Membership Committee Chair	David A. Lavery	International Counsel
Membership Committee Vice-Chair	Suresh Divyanathan	Drew & Napier LLC
Publications Committee Chair	Hideki Kojima	Kojima Law Offices
Publications Committee Vice-Chair	Caroline Berube	HJM Asia Law & Co LLC

Jurisdictional Council Members

Australia	David Laidlaw	Maddocks
Canada	William A. Scott	Stikeman Elliott LLP
China	Xiumei Feng	All China Lawyers Association
France	Patrick Vovan	Vovan & Associates
Germany	Gerhard Wegen	Gleiss Lutz
Hong Kong	Allan Leung	Lovells
India	Praveen Agarwal	Agarwal Jetley & Company Advocates
Indonesia	Nini N. Halim	Hutabarat Halim & Rekan
Japan	Yukukazu Hanamizu	Yuasa & Hara
Korea	Young-Moo Shin	Shin & Kim
Malaysia	Dhinesh Bhaskaran	Shearn Delamore & Co.
New Zealand	Neil Russ	Buddle Findlay
Philippines	Aleli Angela G. Quirino	Angara Abello Concepcion Regala & Cruz (ACCRALAW)
Singapore	Vi Ming Lok	Rodyk & Davidson
Switzerland	Douglas C. Hornung	Hornung Hovagemyan Avocats
Thailand	Anuphan Kitnitchiva	Dherakupt International Law Office Ltd.
UK	Paul Key	Essex Court Chambers
USA	Kenneth J. Stuart	Becker, Glynn, Melamed & Muffly LLP

At-Large Council Members

China	Hongjiu Zhang	Jingtian & Gongcheng Attorneys At Law
Hawaii & South Pacific Islands	Lawrence C. Foster	WMS Richardson School of Law, University of Hawaii
Osaka	Masafumi Kodama	Kitahama Partners
Webmaster	Sylvette Young Tankiang	Villaraza Cruz Marcelo & Angangco

Regional Coordinators

Europe	Jan Kooi	International Counsel (Kooi Worldwide Tax)
Asia Pacific	Robin Joseph Lonergan	Macrossans Lawyers
North America	Cedric Chao	Morrison & Foerster LLP
Sri Lanka and Bangladesh	Mahinda Haradasa	Varners

Committee Chairs

Aviation Law	Chair	Domingo Castillo	SyCip Salazar Hernandez & Gatmaitan
Banking, Finance and Securities	Chair	Hajime Ueno	Nishimura & Asahi
Competition Law	Chair	Susan Ning	King & Wood
Corporate Counsel	Chair	David Laurence Kreider	Vodafone New Zealand Ltd.
Cross-Border Investment	Co-Chairs	Ulf Ohrling	Mannheimer Swartling Advokatbra AB
		Yong-Jae Chang	Lee & Ko
Dispute Resolution and Arbitration	Co-Chairs	Sumeet Kachwaha	Kachwaha & Partners
		Mohanadass Kanagasabai	Mohanadass Partnership
Employment and Immigration Law	Chair	Fiona Loughrey	Simmons & Simmons
Energy and Natural Resources	Chair	Robert Y. Kwauk	Blake, Cassels & Graydon LLP
Environmental Law	Chair	Stephen Marsh	Luce, Forward, Hamilton & Scripps LLP
Insolvency	Chair	Byung Joo Lee	Shin & Kim
Insurance	Chair	Angus Rodger	Steptoe & Johnson
Intellectual Property	Co-Chairs	Guan Huat Khoo	Skrine
		Maxine Chiang	Lee, Tsai & Partners Attorneys-at-Law
International Construction Projects	Chair	Philip Trevor Nunn	Fried, Frank, Harris, Shriver & Jacobson LLP
International Trade	Co-Chairs	Jeffrey Snyder	Crowell Moring LLP
		Rafael Vergara	Carey y Cia
Legal Development and Training	Chair	Ma. Melva E. Valdez	Jimenez Gonzales Liwanag Bello Valdez Caluya & Fernandez (JGLaw)
Legal Practice	Chair	Satoshi Moriguchi	Nagashima Ohno & Tsunematsu
Maritime Law	Chair	Shuji Yamaguchi	Okabe & Yamaguchi
Scholarship	Co-Chairs	Noor Meurling	Soebagjo, Jatim, Djarot
		Varya Simpson	SNR Denton US LLP
Tax Law	Chair	Michael Butler	Finlaysons
Technology and Communications	Chair	Shanti Mogan	Shearn Delamore & Co
Women Business Lawyers	Chair	Sitpah Selvaratnam	Messrs Tommy Thomas

Past Presidents

2009-2010	Rafael A. Morales	SyCip Salazar Hernandez & Gatmaitan	1999-2000	Dej-Udom Krairit	Dej-Udom & Associates Ltd.
2008-2009	Gerold W. Libby	Zuber & Taillieu LLP	1998-1999	Susan Glazebrook	Court of Appeal
2007-2008	Zongze Gao	King & Wood Law Firm	1997-1998	Cecil Abraham	Zul Rafique & Partners
2006-2007	James McH. FitzSimons	Clayton Utz	1996-1997	Teodoro D. Regala	Angara, Abello Concepcion Regala & Cruz (ACCRALAW)
2005-2006	Felix O. Soebagjo	Soebagjo, Jatim, Djarot			Lex Mundi
2004-2005	Sang-Kyu Rhi	Rhi & Partners	1995-1996	Carl E. Anduri, Jr.	Consultant, Tan Rajah & Cheah
2003-2004	Ravinder Nath	Rajinder Narain & Co.	1994-1995	Pathmanaban Selvadurai	TIPLo Attorneys-at-Law
2002-2003	Vivien Chan	Vivien Chan & Co.	1993-1994	Ming-Sheng Lin (deceased)	Glencore International AG General Counsel
2001-2002	Nobuo Miyake	Miyake & Yamazaki	1992-1993	Richard James Marshall	Mori Hamada & Matsumoto
2000-2001	John W. Craig	McMillan LLP	1991-1992	Kunio Hamada	

